

SECTION 3C

WHEEL-TYPE EXCAVATORS

CONTENTS

Features	3C-2
Specifications	3C-3
Shipping dimensions	3C-6
Working ranges, digging force	3C-8
Bucket and arm combination	3C-9
Lifting capacity	3C-11

High mobility

- A high-power KOMATSU engine gives it a higher travel speed for quick relocation.
- Four-wheel drive and double tires (PW60~PW210) both front and rear make it easy to travel over rough or soft terrain.

High working performance

- Large working range and strong digging force.
- The PC system makes full use of engine power.(PW60~PW210)
- A two-pump merge system increases work equipment speed and reduces cycle time.
- Smooth, responsive swing starts and stops

High operating versatility

- Extra-small swing radius boosts operating versatility.
- Excellent stability due to oscillation lock cylinders and double tires.

Enhanced operator comfort

- Hydrostatic drive system assures smooth, easy travel speed changes.
- Newly designed cab offers greater comfort.

Excellent safety and easy maintenance

- Four wheel disc brake with positive braking(Except for PW05)

Specifications

WHEEL-TYPE
 EXCAVATORS

Model		PW05-1	PW20-1	PW30-1
Item				
OPERATING WEIGHT	Kg(lb)	1370(3020)	3060(6750)	3460(7630)
FLYWHEEL HORSEPOWER				
(SAE)	HP(kW)/RPM	13.8(10.3)/2130	24.7(18.4)/2600	27(20.6)/2850
(DIN)	PS (kW)/RPM	14.0(10.3)/2130	25(18.4)/2600	28(20.6)/2850
BUCKET CAPACITY RANGE				
(SAE)	m ³ (cu.yd)	*0.04~0.06 (0.05) (0.08)	*0.05~0.13 (0.07) (0.17)	*0.09~0.18 (0.12) (0.24)
PERFORMANCE:				
Swing speed	PRM	10	10	12
Travel speeds 1st	km/h(MPH)	14.9 (9.3)/7.5 (4.7)	5.1 (3.2)/5.1 (3.2)	5.1 (3.2)/5.5 (3.4)
(Forward/Reverse) 2nd			10.0 (6.2)/10.0 (6.2)	11.0 (6.8)/11.0 (6.8)
3rd			14.9(9.3)/ –	16.5(10.3)/ –
DIMENSIONS:				
Overall length(traveling)		3420 (11' 3")	4620 (15' 2")	4690 (15' 5")
Overall height(traveling)		1640 (5' 5")	1945 (6' 5")	1970 (6' 6")
Overall width		1350 (4' 5")	1690 (5' 7")	1690 (5' 7")
Wheelbase		1480 (4'10")	1900 (6' 3")	1900 (6' 3")
Tread (front)	mm(ft.in)	1100 (3' 7")	1420 (4' 8")	1420 (4' 8")
(rear)		1100 (3' 7")	1420 (4' 8")	1420 (4' 8")
Tail swing radius		1150 (3' 9")	1400 (4' 7")	1470 (4'10")
Ground clearance		160 (6")	200 (8")	205 (8")
ENGINE:				
Model		KOMATSU 3D72	KOMATSU 3D84	KOMATSU 3D84
No. of cylinders	mm(in)	3 – 72×72 (2.8") (2.8")	3 – 84×85 (3.3") (3.3")	3 – 84×85 (3.3") (3.3")
– bore x stroke				
Piston displacement	ltr.(cu.in)	0.879 (53.6)	1.413 (86.2)	1.413 (86.2)
HYDRAULIC SYSTEM:				
Hydraulic pump		2 × Gear pump 1 × Variable Piston	3 × Gear pump	3 × Gear pump
Max. oil flow	ltr. (U.S.Gal)/min	105 (27.7)	96 (25.4)	105 (27.7)
Relief valve setting	kg/cm ² (PSI)	175 (2490)	175 (2490)	175 (2490)
WHEELS:				
(front)	Size x	7.50 – 12 – 4PR x 2	10 – 16.5 – 8PR x 2	10 – 15 – 10PR x 2
(rear)	No. of tires	7.50 – 12 – 4PR x 2	10 – 16.5 – 8PR x 2	10 – 15 – 10PR x 2
CAPACITY(Refilled):				
Fuel tank	ltr.(U.S.Gal)	20 (5.3)	45 (11.9)	45 (11.9)
Hydraulic tank		20.5 (5.4)	36 (9.5)	36 (9.5)

* Heaped (struck x 2)

Specifications

WHEEL-TYPE
EXCAVATORS

Item		Model	PW60-3	PW100-3	PW150-1
OPERATING WEIGHT		Kg(lb)	6540 (14420)	10860 (23940)	15210 (33530)
FLYWHEEL HORSEPOWER					
(SAE)		HP(kW)/RPM	66(52)/2500	99(73.6)/1900	85(63)/2400
(DIN)		PS (kW)/RPM	67(52)/2500	100(73.6)/1900	86(63)/2400
BUCKET CAPACITY RANGE					
(SAE)		m ³ (cu.yd)	0.20~0.36 (0.26) (0.47)	0.18~0.56 (0.24) (0.73)	0.45~0.75 (0.59) (0.98)
PERFORMANCE:					
Swing speed		PRM	14	11.8	11
Travel speeds 1st		km/h(MPH)	7.0 (4.3)/7.0 (4.3)	10.0 (6.2)/10.0 (6.2)	7.4 (4.6)/7.4 (4.6)
(Forward/Reverse) 2nd			34.0 (21.1)/34.0 (21.1)	34.5 (21.4)/34.5 (21.4)	20.0 (12.4)/20.0 (12.4)
3rd			—	—	—
DIMENSIONS:					
Overall length(traveling)		mm(ft.in)	5680 (18' 8")	6970 (22'10")	8400 (27' 7")
Overall height(traveling)			3620 (11'11")	3620 (11'11")	3710 (12' 2")
Overall width			2360 (7' 9")	2430 (8')	2455 (8' 1")
Wheelbase			2400 (7'11")	2600 (8' 6")	2600 (8' 6")
Tread (front)			1740 (5' 9")	1810 (5'11")	1810 (5'11")
(rear)			1740 (5' 9")	1810 (5'11")	1810 (5'11")
Tail swing radius			1735 (5' 8")	2100 (6'11")	2450 (8')
Ground clearance			280 (11")	315 (1')	335 (1' 1")
ENGINE:			KOMATSU	KOMATSU	KOMATSU
Model			4D95L	S6D95L	6D95L
No. of cylinders		mm(ft.in)	4 – 95 × 115	6 – 95 × 115	6 – 95 × 115
– bore x stroke			(3.74") (4.53")	(3.74") (4.53")	(3.74") (4.53")
Piston displacement		ltr.(cu.in)	3.26 (199)	4.89 (298)	4.89 (298)
HYDRAULIC SYSTEM:			2 × Variable Piston	2 × Variable Piston	2 × Variable Piston
Hydraulic pump		ltr. (U.S.Gal)/min kg/cm ² (PSI)	1 × Gear pump	1 × Gear pump	1 × Gear pump
Max. oil flow			206 (54.4)	233 (61.6)	297 (78.5)
Relief valve setting			300 (4266)	320 (4550)	320 (4550)
WHEELS:					
(front)		Size x No. of tires	7.50 – 20 – 12PR × 4	9.00 – 20 – 12PR × 4	10.00 – 20 – 14PR × 4
(rear)			7.50 – 20 – 12PR × 4	9.00 – 20 – 12PR × 4	10.00 – 20 – 14PR × 4
CAPACITY(Refilled):					
Fuel tank		ltr.(U.S.Gal)	140 (37)	210 (55.5)	240 (63.4)
Hydraulic tank			88 (23.2)	110 (29.1)	190 (50.2)

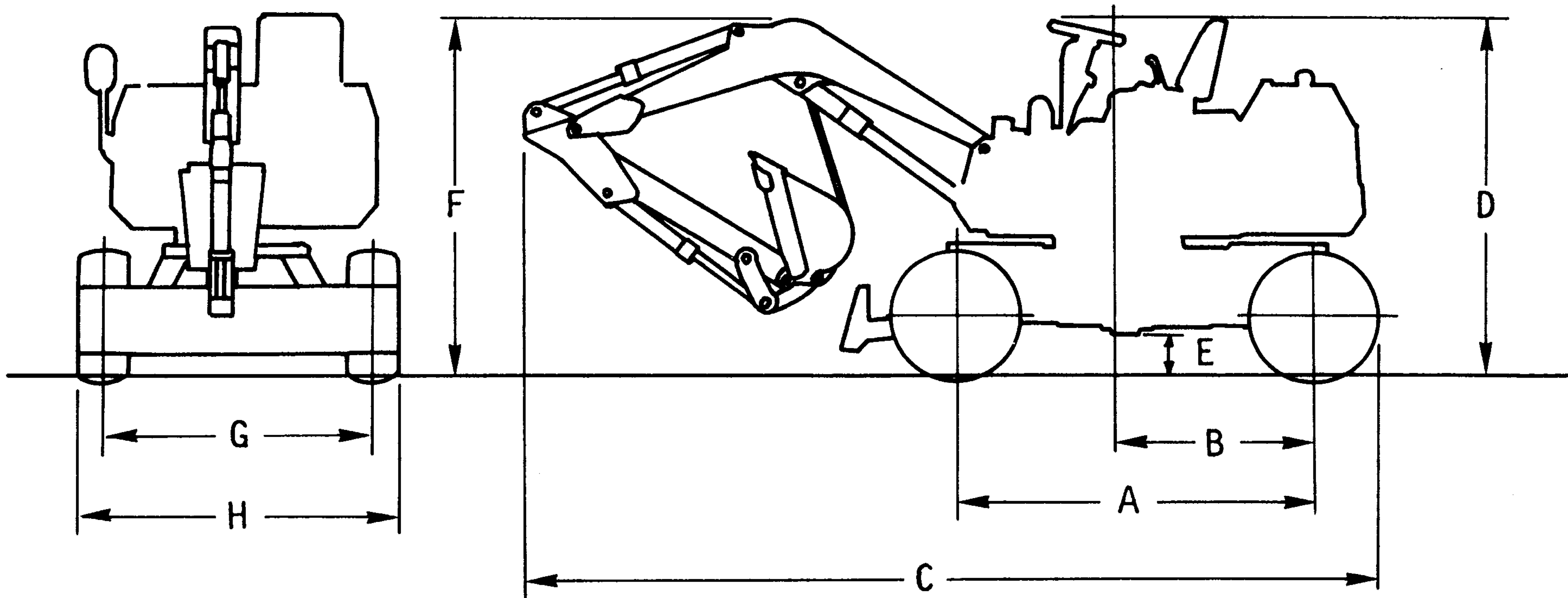
Specifications

WHEEL-TYPE
EXCAVATORS

Model		PW210-1		
Item				
OPERATING WEIGHT	Kg(lb)	18980 (41840)		
FLYWHEEL HORSEPOWER (SAE) (DIN)	HP(kW)/RPM PS (kW)/RPM	153(114)/2100 155(114)/2100		
BUCKET CAPACITY RANGE (SAE)	m ³ (cu.yd)	0.36~1.17 (0.47) (1.53)		
PERFORMANCE: Swing speed Travel speeds 1st (Forward/Reverse) 2nd 3rd	PRM km/h(MPH)	13 8.0 (5.0)/8.0 (5.0) 34.9 (21.7)/34.9 (21.7) —		
DIMENSIONS: Overall length(traveling) Overall height(traveling) Overall width Wheelbase Tread (front) (rear) Tail swing radius Ground clearance	mm(ft.in)	9480 (31' 1") 3740 (12' 3") 2610 (8' 7") 2800 (9' 2") 1860 (6' 1") 1860 (6' 1") 2700 (8'10") 335 (1' 1")		
ENGINE: Model No. of cylinders — bore x stroke Piston displacement	mm(in) ltr.(cu.in)	KOMATSU S6D105 6 – 105 x 125 (4.1") (4.9") 6.49 (396)		
HYDRAULIC SYSTEM: Hydraulic pump Max. oil flow Relief valve setting	ltr. (U.S.Gal)/min kg/cm ² (PSI)	2 x Variable Piston 1 x Gear pump 439 (116) 350 (4980)		
WHEELS: (front) (rear)	Size x No. of tires	10.0 – 20 – 14PR x 4 10.0 – 20 – 14PR x 4		
CAPACITY(Refilled): Fuel tank Hydraulic tank	ltr.(U.S.Gal)	280 (74) 150 (39.6)		

Shipping Dimensions

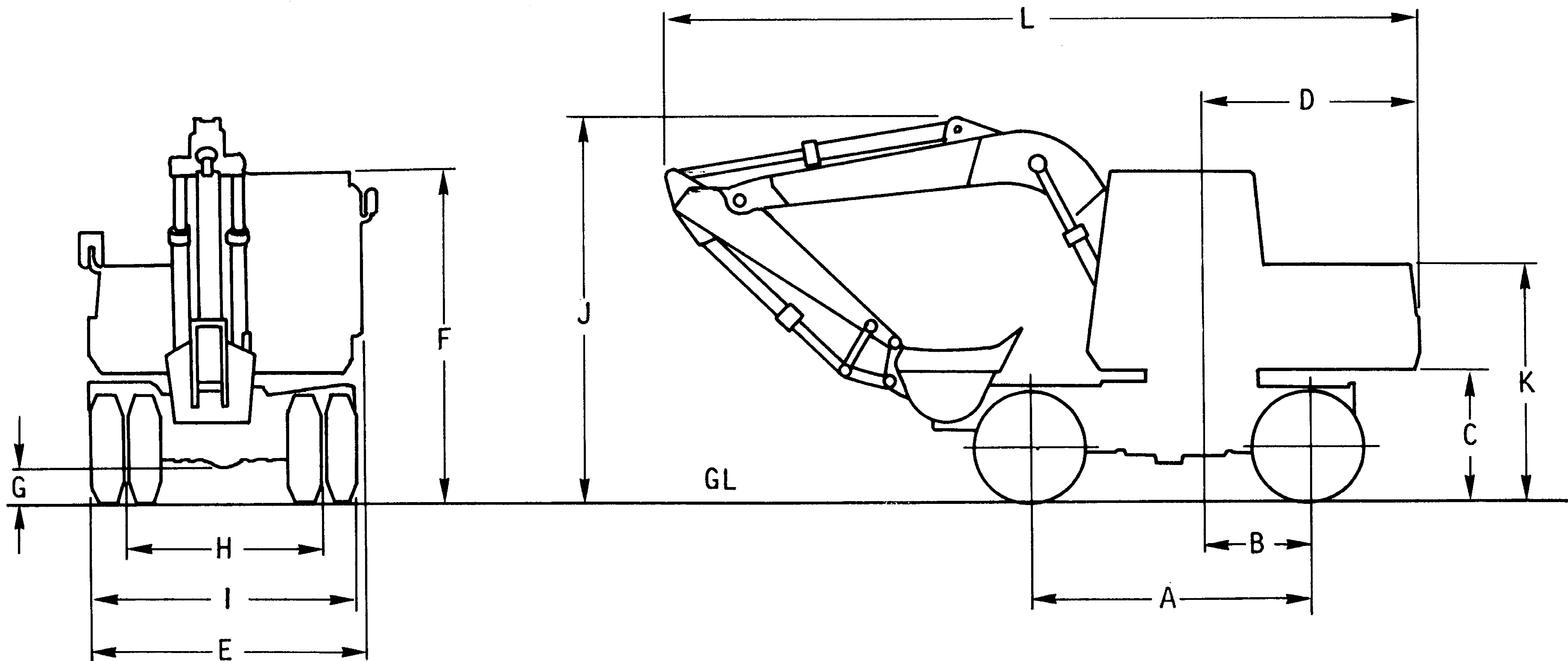
WHEEL-TYPE
EXCAVATORS



Item	A	B	C	D	E	F	G	H	Boom length m	Arm length m
Model	mm (ft.in)	mm (ft.in)	mm (ft.in)	mm (ft.in)	mm (ft.in)	mm (ft.in)	mm (ft.in)	mm (ft.in)	(ft.in)	(ft.in)
PW05-1	1480 (4'10")	810 (2'8")	3420 (11'3")	1640 (5'5")	160 (6.3")	1750 (5'9")	1100 (3'7")	1350 (4'5")	1.53 (5')	1.18 (3'10")
PW20-1	1900 (6'3")	1050 (3'5")	4620 (15'2")	1945 (6'5")	200 (7.9")	1970 (6'6")	1420 (4'8")	1690 (5'7")	2.19 (7'2")	1.365 (4'6")
PW30-1	1900 (6'3")	1050 (3'5")	4690 (15'5")	1950 (6'5")	205 (8.1")	1970 (6'6")	1420 (4'8")	1690 (5'7")	2.19 (7'2")	1.425 (4'8")

Shipping Dimensions

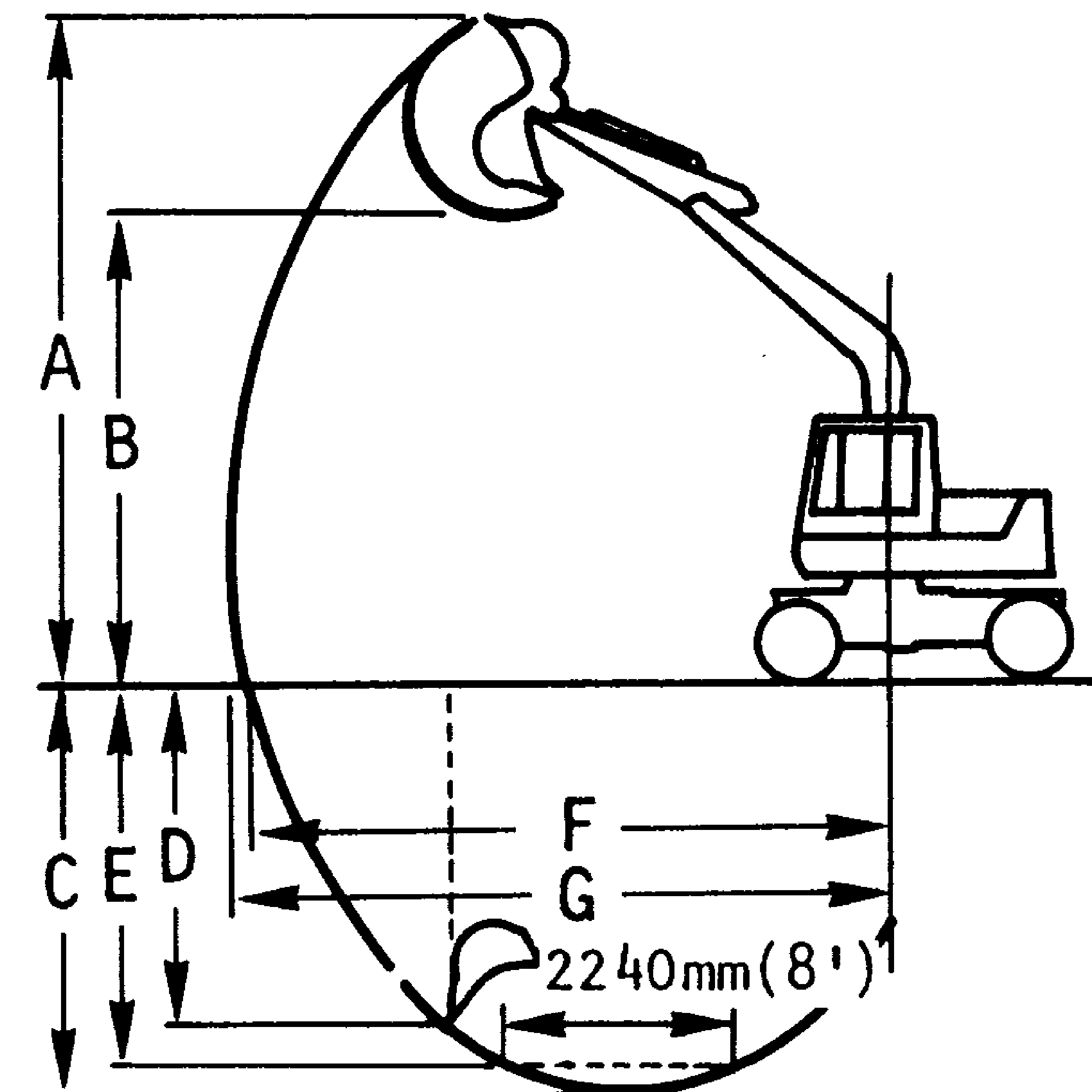
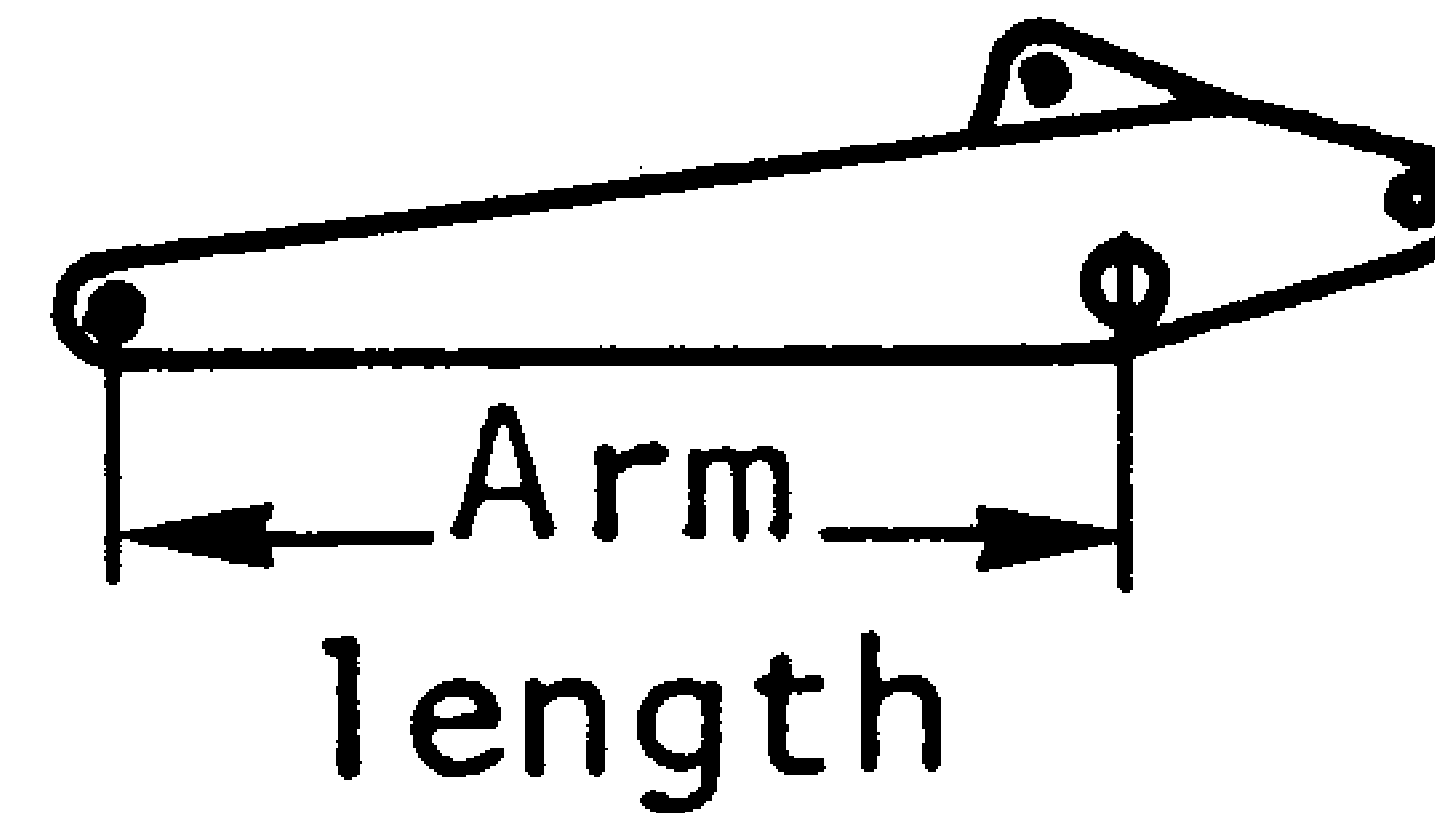
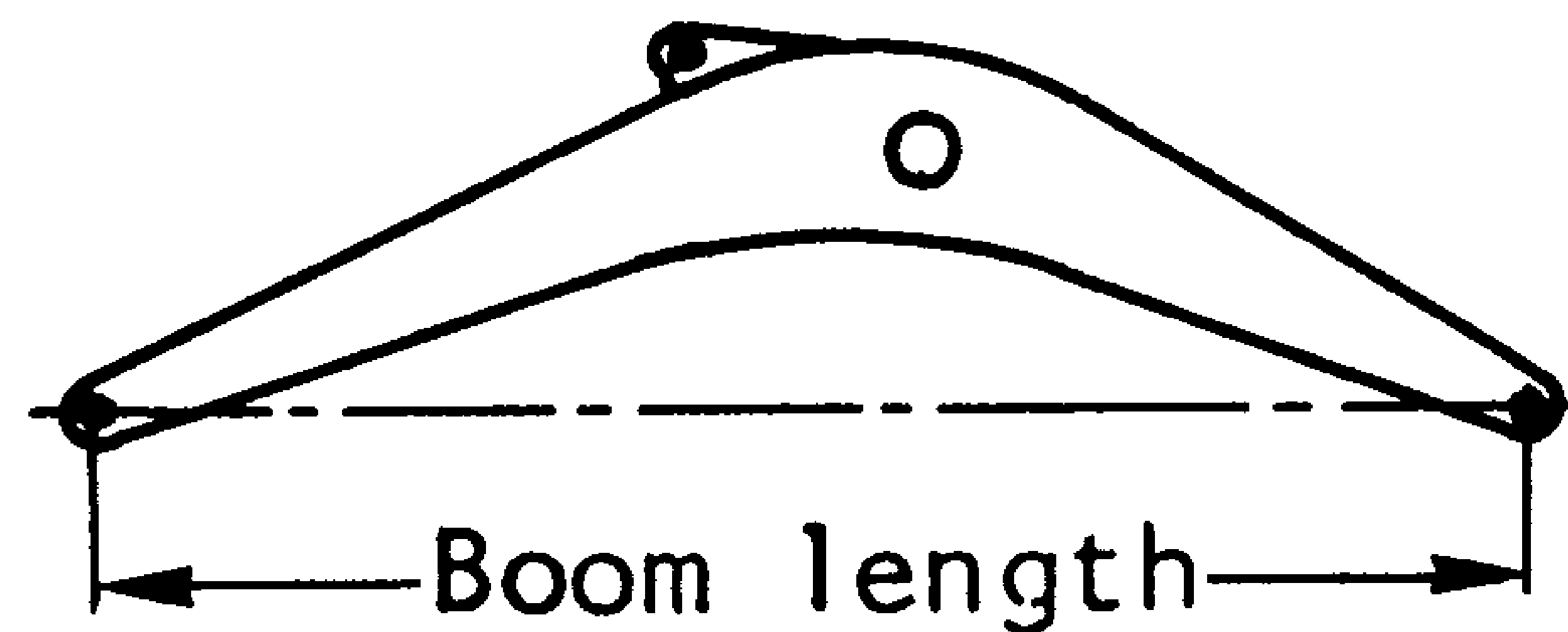
WHEEL-TYPE
EXCAVATORS



	A mm (ft.in)	B mm (ft.in)	C mm (ft.in)	D mm (ft.in)	E mm (ft.in)	F mm (ft.in)	G mm (ft.in)	H mm (ft.in)	I mm (ft.in)	J mm (ft.in)	K mm (ft.in)	L mm (ft.in)	Boom length m(ft.in)	Arm length m(ft.in)
PW60-3	2400 (7'11")	950 (3'1")	1085 (3'7")	1710 (5'7")	2300 (7'7")	2885 (9'6")	280 (11")	1740 (5'9")	2260 (7'5")	3620 (11'11")	1985 (6'6")	5680 (8'8")	3.62 (11'11")	1.75 (5'9")
										3760 (12'4")		5460 (17'11")		
PW100-3	2600 (8'6")	1000 (3'3")	1215 (4')	2020 (6'8")	2430 (8')	3020 (9'11")	315 (1')	1810 (5'11")	2400 (7'10")	3620 (11'11")	2165 (7'1")	6970 (22'10")	4.26 (14')	2.0 (6'7")
										3750 (12'3")		6810 (22'3")		
PW150-1	2600 (8'6")	1160 (3'7")	1235 (4'1")	2375 (7'10")	2455 (8'1")	3035 (9'11")	335 (1'1")	1810 (5'11")	2430 (8")	3710 (12'2")	2190 (7'2")	8400 (27'7")	5.15 (16'11")	1.85 (6'1")
										3635 (11'11")		8405 (27'7")		
										3745 (12'3")		8370 (27'6")		
PW210-1	2800 (9'2")	1420 (4'8")	1310 (4'4")	2680 (8'10")	2610 (8'7")	3130 (10'3")	335 (1'1")	1860 (6'1")	2490 (8'2")	-	2520 (8'3")	-	5.7 (18'8")	1.8 (5'11")
										3740 (12'3")		9480 (31'1")		
										3740 (12'3")		9460 (31')		

Shipping Dimensions

WHEEL-TYPE EXCAVATORS



	Boom length m(ft.in)	Arm length m(ft.in)	A mm (ft.in)	B mm (ft.in)	C mm (ft.in)	D mm (ft.in)	E mm (ft.in)	F mm (ft.in)	G mm (ft.in)	Bucket digging force kg (lb/kN)	Arm crowd force kg (lb/kN)
PW05-1	1.53 (5')	1.18 (3'10")	3280 (10'9")	2345 (7'8")	1785 (5'10")	1395 (4'7")	1135 (3'9")	3530 (11'7")	3680 (12'1")	1000 (2200/9.8)	580 (1280/5.7)
		1.395 (4'7")	3370 (11'1")	2435 (8')	2000 (6'7")	1600 (5'3")	1440 (4'9")	3740 (12'3")	3880 (12'9")		515 (1136/5.0)
PW20-1	2.19 (7'2")	1.365 (4'6")	4410 (14'6")	3180 (10'5")	2630 (8'8")	1890 (6'2")	2160 (7'1")	4635 (15'2")	4830 (15'10")	2050 (4520/20.1)	1220 (2690/12.0)
PW30-1	2.19 (7'2")	1.425 (4'8")	4625 (15'2")	3210 (10'6")	2810 (9'3")	1895 (6'3")	2330 (7'8")	4825 (15'10")	5015 (16'5")	2300 (5070/22.6)	1300 (2866/12.7)
PW60-3	3.62 (11'11")	1.75 (5'9")	6860 (22'6")	4770 (15'8")	3740 (12'3")	3140 (10'4")	3420 (11'3")	6150 (20'2")	6360 (20'10")	4500 (9920/44.1)	3500 (7720/34.3)
		2.25 (7'5")	6860 (22'6")	4840 (15'11")	4240 (13'11")	3325 (10'11")	3935 (12'11")	6525 (21'5")	6730 (22'1")		3060 (6743/30.0)
PW100-3	4.62 (14')	2.0 (6'7")	7520 (24'8")	5330 (17'6")	4370 (14'4")	3690 (12'1")	4100 (13'5")	7160 (23'6")	7375 (24'2")	6500 (14330/63.7)	5200 (11460/51.0)
		2.3 (7'7")	7650 (25'1")	5450 (17'11")	4670 (15'4")	3910 (12'10")	4400 (14'5")	7440 (24'5")	7645 (25'1")		4800 (10580/47.1)
PW150-1	5.15 (16'11")	1.85 (6'1")	8420 (27'8")	6190 (20'4")	4720 (15'6")	2930 (9'7")	4430 (14'6")	7910 (25'11")	8150 (26'9")	10650 (23480/104)	10200 (22490/100)
		2.255 (7'5")	8240 (27')	6130 (20'1")	5130 (16'10")	2570 (8'5")	4810 (15'9")	8150 (26'9")	8340 (27'4")		8170 (18010/80)
		2.90 (9'6")	8400 (27'7")	6300 (20'8")	5770 (18'11")	3120 (10'3")	5490 (18')	8700 (28'7")	8920 (29'3")		6950 (15320/68)
PW210-1	5.7 (18'8")	1.8 (5'11")	8910 (29'3")	6190 (20'4")	5180 (17')	4710 (15'5")	4910 (16'1")	8590 (28'2")	8840 (29')	10700 (23590/105)	11900 (26230/116)
		2.41 (7'11")	9200 (30'2")	6460 (21'7")	5800 (19')	5340 (17'6")	5550 (18'3")	9170 (30'1")	9410 (30'10")		10300 (22710/101)
		2.295 (9'7")	9040 (30'4")	6540 (21'5")	6300 (20'8")	5700 (18'8")	6090 (20')	9600 (31'6")	9830 (32'3")		8800 (19400/86.2)

Bucket and Arm
Combinations

WHEEL-TYPE
EXCAVATORS

These charts are based on over-side stability with fully loaded bucket at maximum reach.

- Material weight up to 1.8t/m³(3000 lb/cu. yd)
- Material weight up to 1.5t/m³(2500 lb/cu. yd)
- △ Material weight up to 1.2t/m³(2000 lb/cu. yd)
- × Not usable.

Bucket capacity(heaped)		Width		*Weight kg(lb)	Arm length m(ft.in)	
SAE, PCSA m³(cu.yd)	CECE m³(cu.yd)	Without Side cutters mm(in)	With Side cutters mm(in)			
PW05-1					1.18 (3'10")	1.395 (4'7")
0.025(0.035)	0.02 (0.03)	250 (9.8")	300 (11.8")	17.5 (39)	○	○
0.04 (0.05)	0.03 (0.04)	350 (13.8")	400 (15.7")	19 (42)	○	□
PW20-1					1.365 (4'6")	-
0.03 (0.04)	0.03 (0.04)	250 (9.8")	280 (11")	36 (79)	○	-
0.05 (0.07)	0.043(0.06)	350 (13.8")	380 (15")	45 (99)	○	-
0.08 (0.10)	0.08 (0.10)	450 (17.7")	480 (18.9")	44 (97)	○	-
0.10 (0.13)	0.08 (0.10)	600 (23.6")	630 (24.8")	62 (137)	○	-
PW30-1					1.425 (4'8")	-
0.06 (0.08)	0.05 (0.07)	300 (11.8")	330 (13")	90 (198)	○	-
0.10 (0.13)	0.09 (0.12)	500 (19.7")	530 (20.9")	73 (161)	○	-
0.12 (0.16)	0.11 (0.14)	600 (23.6")	630 (24.8")	80 (176)	○	-
PW60-3					1.75 (5'9")	2.25 (7'5")
0.20 (0.26)	0.18 (0.24)	550 (21.7")	650 (25.6")	184 (406)	○	○
0.28 (0.37)	0.25 (0.33)	650 (25.6")	750 (29.5")	210 (463)	○	x
0.36 (0.47)	0.32 (0.42)	725 (28.5")	825 (32.5")	220 (485)	□	x
PW100-3					2.0 (6'7")	2.3 (7'7")
0.18 (0.24)	0.16 (0.21)	450 (17.7")	570 (22.4")	220 (485)	○	○
0.28 (0.37)	0.26 (0.34)	600 (23.6")	720 (28.3")	289 (637)	○	○
0.36 (0.47)	0.33 (0.43)	700 (27.6")	820 (32.3")	314 (692)	○	○
0.38 (0.50)	0.35 (0.46)	825 (32.5")	950 (37.4")	345 (761)	○	○
0.44 (0.58)	0.40 (0.52)	825 (32.5")	925 (36.4")	358 (789)	○	□
0.56 (0.73)	0.50 (0.65)	1000 (39.4")	-	388 (855)	○	□

* With side cutters

Bucket and Arm
Combinations

WHEEL-TYPE
EXCAVATORS

These charts are based on over-side stability with fully loaded bucket at maximum reach.

- Material weight up to 1.8t/m³(3000 lb/cu. yd)
- Material weight up to 1.5t/m³(2500 lb/cu. yd)
- △ Material weight up to 1.2t/m³(2000 lb/cu. yd)
- × Not usable.

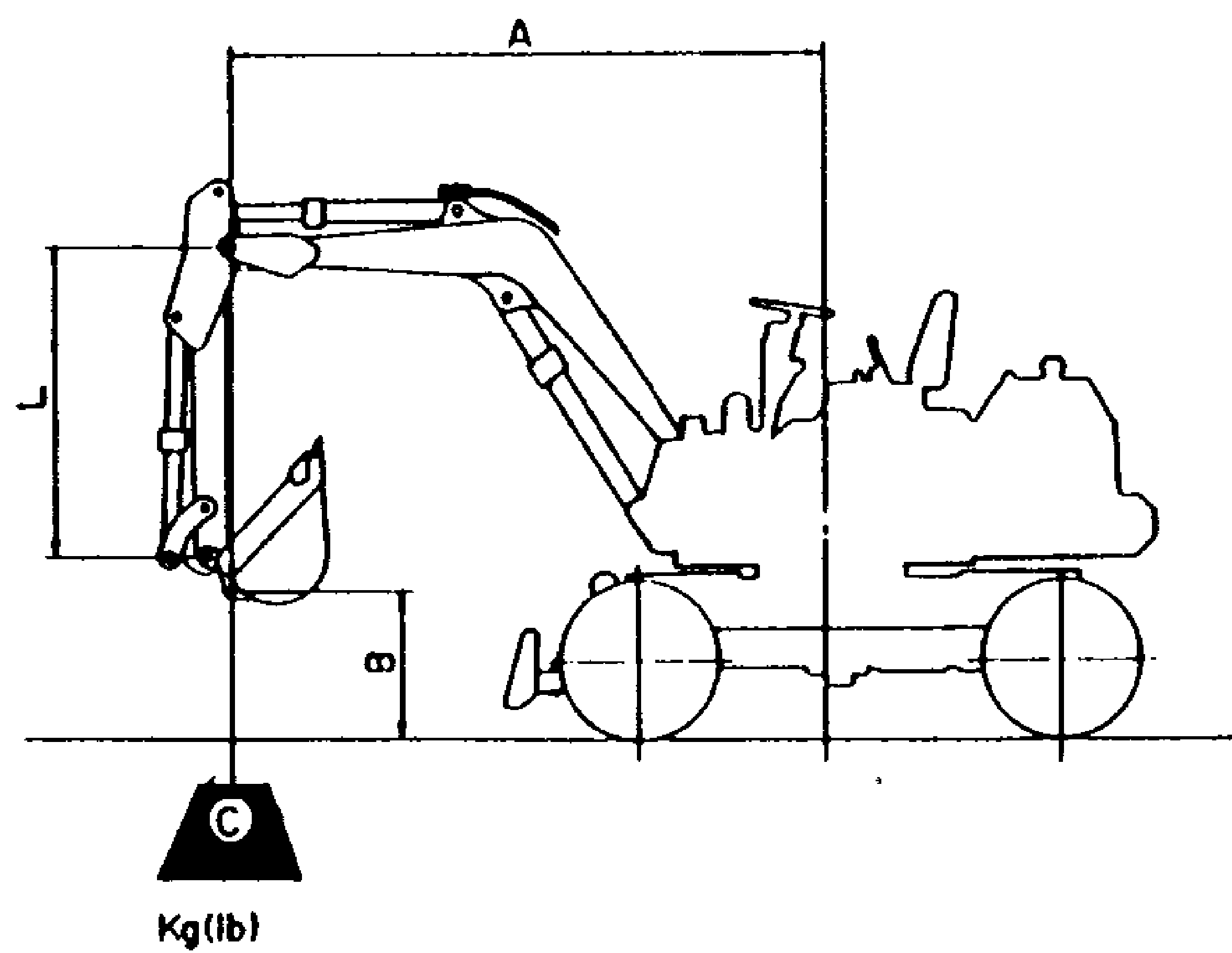
Bucket capacity(heaped)		Width		*Weight kg(lb)	Arm length			
SAE,PCSA m³(cu.yd)	CECE m³(cu.yd)	Without Side cutters mm(ft.in)	With Side cutters mm(ft.in)		m(ft.in)			
PW150-1					1.85 (6'1")	2.255 (7'5")	2.9 (9'6")	—
0.45 (0.59)	0.40 (0.52)	700 (27.6")	800 (31.5")	437 (963)	○	○	○	—
0.62 (0.81)	0.55 (0.72)	950 (37.4")	1070 (42.1")	510 (1120)	○	○	□	—
0.75 (0.98)	0.65 (0.85)	1100 (43.3")	—	525 (1157)	○	□	□	—
PW210-1					1.8 (5'11")	2.41 (7'11")	2.925 (9'7")	—
0.36 (0.47)	0.33 (0.43)	560 (22")	665 (26.2")	410 (904)	○	○	○	**
0.50 (0.65)	0.45 (0.59)	750 (29.5")	855 (33.7")	440 (970)	○	○	○	
0.80 (1.05)	0.70 (0.92)	1045 (44.1")	1150 (45.3")	576 (1270)	○	○	○	
0.93 (1.22)	0.80 (1.05)	1200 (47.2")	1305 (51.4")	590 (1301)	○	○	○	
1.05 (1.37)	0.90 (1.12)	1330 (52.4")	1435 (56.5")	656 (1433)	○	○	○	
1.17 (1.53)	1.00 (1.31)	1450 (57.1")	—	660 (1455)	□	□	x	
1.40 (1.83)	1.20 (1.57)	1680 (66.1")	—	710 (1565)	□	x	x	

- * With side cutters
- ** With expanded outrigger

Lifting Capacity

WHEEL-TYPE
EXCAVATORS

PW30-1



- A: Reach from swing center
B: Bucket hook height
C: Lifting capacity
Cf: Rating over front
Cs: Rating over side
⊗: Rating at maximum reach

Arm length 1425 mm (4'8")
with blade above ground

unit: kg (lb)

B \ A	⊗ Max		3 m (9'10")		2 m (6'7")		0 m (0)	
	Cf	Cs	Cf	Cs	Cf	Cs	Cf	Cs
3 m (9'10")							*500 (1100)	*500 (1100)
2 m (6'7")	*350 (800)	*350 (800)	*400 (900)	*400 (900)			*250 (500)	*250 (500)
1 m (3'3")	*400 (900)	*400 (900)	*550 (1200)	*550 (1200)	*850 (1900)	*850 (1900)		
0 m	*500 (1100)	*500 (1100)	*600 (1300)	*600 (1300)	*1150 (2500)	*1150 (2500)		
-1 m (3'3")	*650 (1400)	*650 (1400)			*950 (2100)	*950 (2100)		

with blade on ground

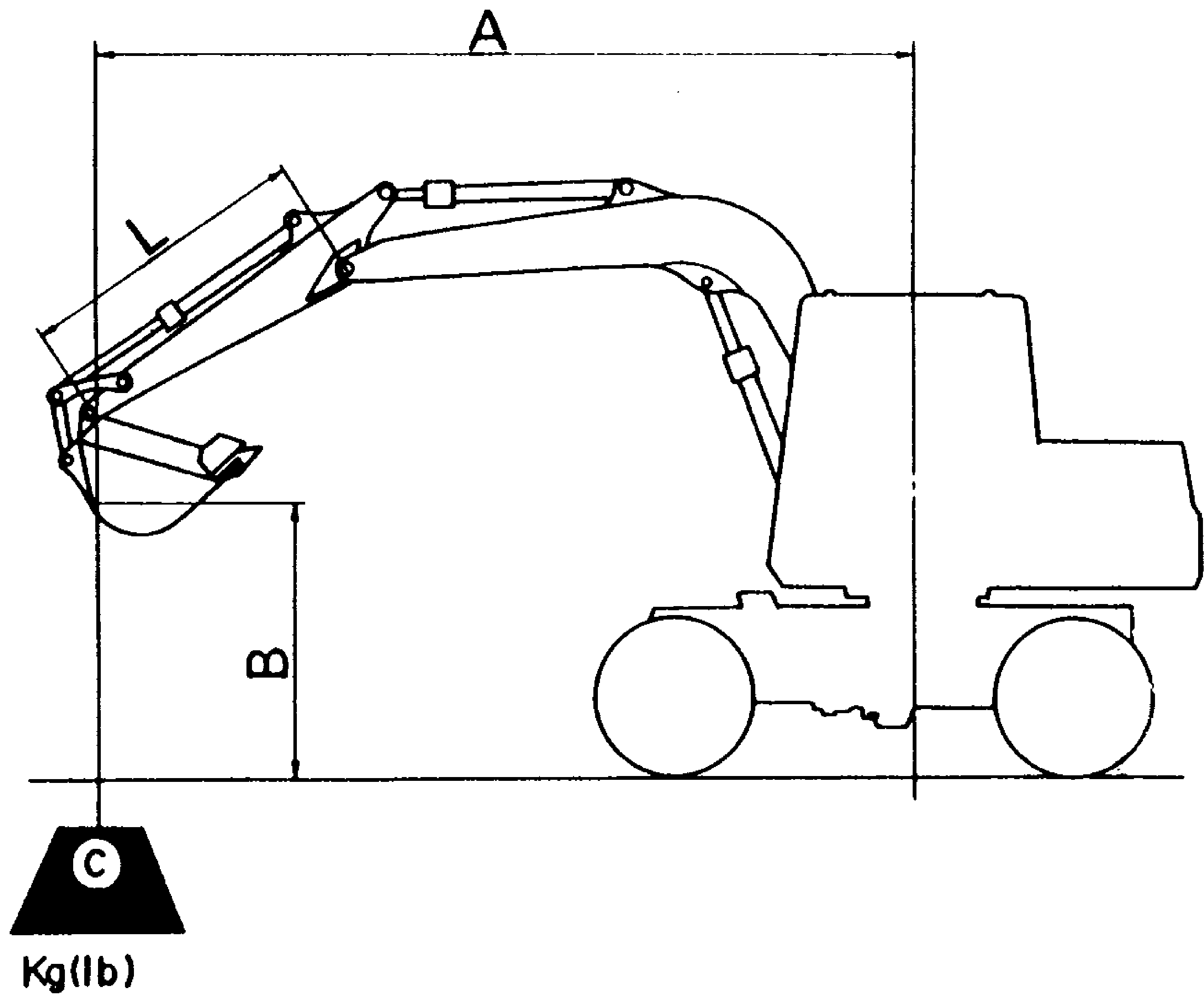
B \ A	⊗ Max		3 m (9'10")		2 m (6'7")		0 m (0)	
	Cf	Cs	Cf	Cs	Cf	Cs	Cf	Cs
3 m (9'10")							*500 (1100)	*500 (1100)
2 m (6'7")	*350 (800)	*350 (800)	*400 (900)	*400 (900)			*250 (500)	*250 (500)
1 m (3'3")	*400 (900)	*400 (900)	*550 (1200)	*550 (1200)	*850 (1900)	*850 (1900)		
0 m	*500 (1100)	*500 (1100)	*600 (1300)	*600 (1300)	*1150 (2500)	*1150 (2500)		
-1 m (3'3")	*650 (1400)	*650 (1400)			*950 (2100)	*950 (2100)		

* Load is limited by hydraulic capacity rather than tipping.
Ratings are based on SAE Standard No. J1097. Rated loads do not exceed 87% of hydraulic lift capacity or 75% of tipping load.

Lifting Capacity

WHEEL-TYPE EXCAVATORS

PW60-3



A: Reach from swing center
B: Bucket hook height
C: Lifting capacity

Cf:  Rating over front

Cs:  Rating over side

⊗: Rating at maximum reach

Arm length 1750 mm (5' 9")

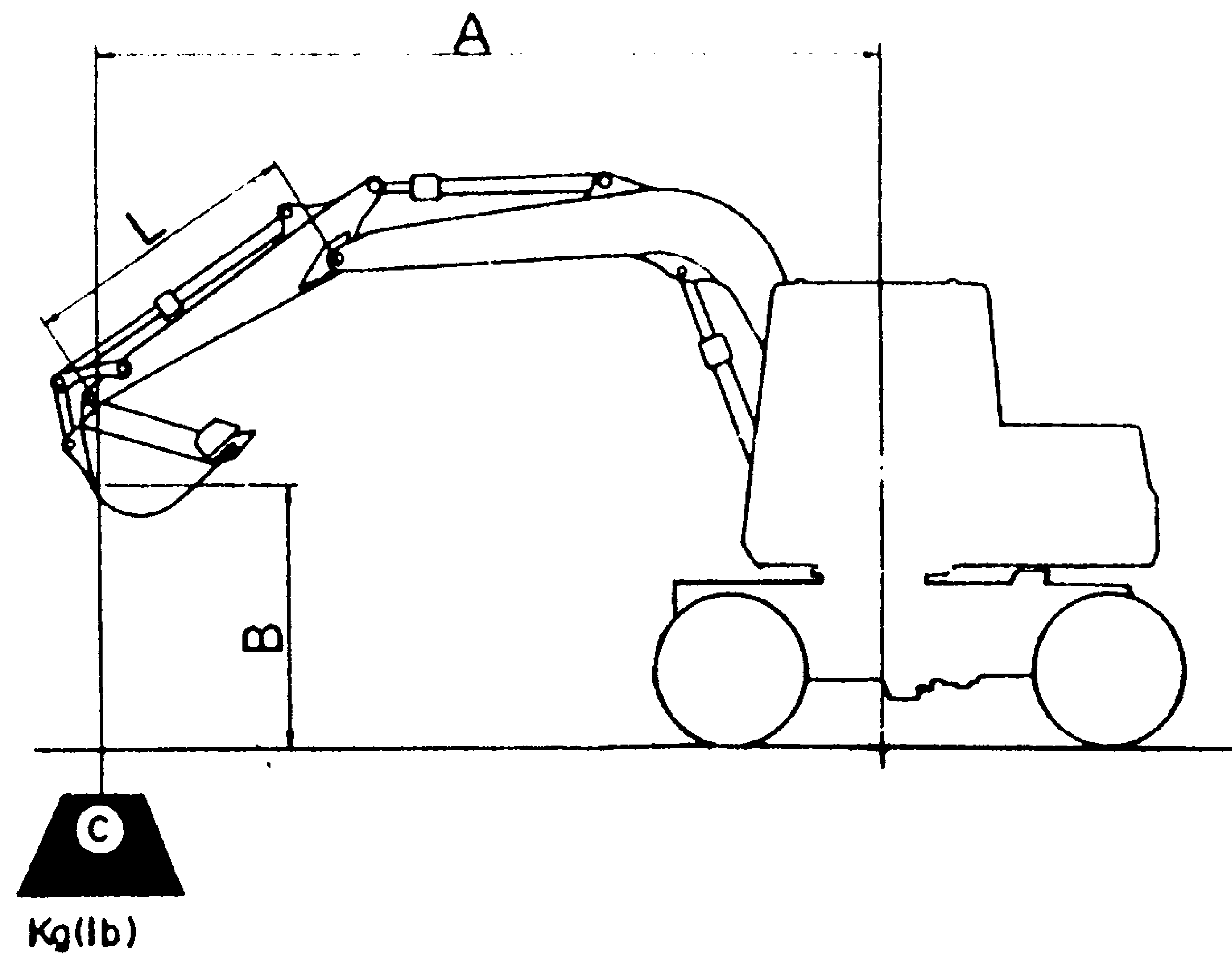
unit: kg (lb)												
B A	⊗ MAX		5 m (16'5")		4 m (13'1")		3 m (9'10")		2 m (6'7")		1 m (3'3")	
	Cf	Cs	Cf	Cs	Cf	Cs	Cf	Cs	Cf	Cs	Cf	Cs
5 m (16'5")	*1350 (3000)	*1350 (3000)										
4 m (13'1")	*1350 (3000)	1050 (2300)			*1350 (3000)	1300 (2900)						
3 m (9'10")	*1400 (3100)	850 (1900)			*1550 (3400)	1250 (2800)	*1900 (4200)	*1900 (4200)	*2750 (6100)	*2750 (6100)		
2 m (6'7")	*1450 (3300)	750 (1700)	*1500 (3300)	800 (1800)	*1800 (3900)	1150 (2600)	*2400 (5300)	1900 (4200)				
1 m (3'3")	1500 (3300)	750 (1700)	1550 (3400)	750 (1700)	*2000 (4400)	1100 (2400)	*2800 (6200)	1750 (3900)				
0 m (0')	1600 (3560)	750 (1700)			*2100 (4600)	1050 (2300)	*2950 (6500)	1700 (3700)	*3200 (7000)	*3200 (7000)		
-1 m (-3'3")	*1800 (4000)	900 (2000)			*2050 (4500)	1050 (2300)	*2850 (6300)	1660 (3700)	*4200 (9300)	3400 (7500)	*3350 (7400)	*3350 (7400)
-2 m (-6'7")	*1950 (4300)	1250 (2800)					*2450 (5400)	1700 (3700)	*3500 (7800)	3500 (7700)		

* Load is limited by hydraulic capacity rather than tipping.
Ratings are based on SAE Standard No. J1097. Rated loads do not exceed 87% of hydraulic lift capacity or 75% of tipping load.

Lifting Capacity

WHEEL-TYPE EXCAVATORS

PW60-3



A: Reach from swing center

B: Bucket hook height

C: Lifting capacity

Cf:  Rating over front

Cs:  Rating over side

⊙: Rating at maximum reach

Arm length 1750 mm (5' 9")

unit: kg (lb)												
B A	⊙ MAX		5 m (16'5")		4 m (13'1")		3 m (9'10")		2 m (6'7")		1 m (3'3")	
	Cf	Cs	Cf	Cs	Cf	Cs	Cf	Cs	Cf	Cs	Cf	Cs
5 m (16'5")	*1350 (3000)	*1350 (3000)										
4 m (13'1")	1300 (2900)	1050 (2300)			*1350 (3000)	1300 (2900)						
3 m (9'10")	1100 (2400)	850 (1900)			*1550 (3400)	1250 (2800)	*1900 (4200)	*1900 (4200)	*2750 (6100)	*2750 (6100)		
2 m (6'7")	1000 (2200)	750 (1700)	1050 (2300)	800 (1800)	1500 (3300)	1150 (2600)	2400 (5300)	1900 (4200)				
1 m (3'3")	950 (2100)	750 (1700)	1000 (2200)	750 (1700)	1450 (3200)	1100 (2400)	2250 (5000)	1750 (3900)				
0 m (0')	1000 (2200)	750 (1700)			1400 (3100)	1050 (2300)	2200 (4800)	1700 (3700)	*3200 (7000)	*3200 (7000)		
-1 m (-3'3")	1200 (2600)	900 (2000)			1350 (3000)	1050 (2300)	2200 (4800)	1650 (3600)	*4200 (9300)	3400 (7500)	*3350 (7400)	*3350 (7400)
-2 m (-6'7")	1650 (3600)	1250 (2800)					2200 (4900)	1700 (3700)	*3500 (7800)	3500 (7800)		

* Load is limited by hydraulic capacity rather than tipping.

Ratings are based on SAE Standard No. J1097. Rated loads do not exceed 87% of hydraulic lift capacity or 75% of tipping load.

Lifting Capacity

WHEEL-TYPE
EXCAVATORS

PW100-3

WITHOUT OUTRIGGER

Arm length 2000mm(6'7")

A m (ft.in) B m (ft.in)			6.5 (21.4)	6.0 (19.8)	5.5 (18.1)	5.0 (16.5)	4.5 (14.7)	4.0 (13.1)	3.5 (11.6)	3.0 (9.10)
6.0 (19.8)	F	1600 •(3528)					2250 •(4960)			
	S	1600 •(3528)					2250 (4960)			
5.0 (16.5)	F	1500 •(3307)			1600 •(3528)	2300 •(5071)	2300 •(5071)			
	S	1500 •(3307)			1500 (3307)	1850 (4079)	2250 (4960)			
4.0 (13.1)	F	1450 •(3197)		1550 •(3417)	1950 (4299)	2300 (5071)	2550 •(5622)	2700 •(5952)		
	S	1250 (2756)		1250 (2756)	1500 (3307)	1800 (3968)	2200 (4850)	2700 •(5952)		
3.0 (7.10)	F	1450 (3197)		1600 (3528)	1900 (4189)	2250 (4960)	2650 (5842)	3200 •(7055)	3600 •(7937)	4200 •(9259)
	S	1100 (2425)		1250 (2756)	1450 (3197)	1750 (3858)	2100 (4630)	2550 (5622)	3200 (7054)	4100 (9039)
2.0 (6.7)	F	1400 (3086)		1600 (3528)	1850 (4079)	2150 (4740)	2550 (5612)	3050 (6724)	3750 (8267)	4750 (10472)
	S	1050 (2315)		1200 (2646)	1400 (3086)	1650 (3638)	2000 (4409)	2400 (5291)	2900 (6393)	3700 (8157)
1.0 (3.3)	F	1400 (3086)		1550 (3417)	1800 (3968)	2050 (4519)	2450 (5401)	2900 (6393)	3550 (7826)	4450 (9810)
	S	1050 (2315)		1150 (2535)	1350 (2976)	1600 (3528)	1850 (4079)	2250 (4960)	2750 (6063)	3400 (7496)
0.0 (0)	F	1450 (3197)		1500 (3307)	1750 (3858)	2000 (4409)	2350 (5180)	2800 (6173)	3450 (7606)	4350 (9590)
	S	1050 (2315)		1150 (2535)	1300 (2866)	1500 (3307)	1800 (3968)	2150 (4740)	2600 (5732)	3300 (7275)
-1.0 (-3.3)	F	1600 (3528)			1700 (3748)	2000 (4409)	2300 (5071)	2750 (6063)	3400 (7496)	4350 (9590)
	S	1200 (2646)			1300 (2866)	1500 (3307)	1750 (3858)	2100 (4630)	2600 (5732)	3300 (7275)
-2.0 (-6.7)	F	1900 (4189)				2000 (4409)	2350 (5181)	2800 (6173)	3400 (7496)	4350 (9590)
	S	1450 (3197)				1500 (3307)	1750 (3858)	2100 (4630)	2600 (5732)	3300 (7275)
-3.0 (-9.10)	F	2600 (5732)						2850 (6283)	3500 (7716)	4400 (9700)
	S	2000 (4409)						2200 (4850)	2700 (5952)	3450 (7606)

* Load is limited by hydraulic capacity rather than tipping.
Ratings are based on SAE Standard No. J1097. Rated loads do not exceed 87% of hydraulic lift capacity or 75% of tipping load.


Lifting Capacity

WHEEL-TYPE EXCAVATORS

PW100-3

WITH OUTRIGGER ON GROUND

Arm length 2000mm(6'7")

A m (ft.in) B m (ft.in)			6.5 (21.4)	6.0 (19.8)	5.5 (18.1)	5.0 (16.5)	4.5 (14.9)	4.0 (13.1)	3.5 (11.6)	3.0 (9.10)
6.0 (17.8)	F	1600 •(3527)					2250 •(4960)			
	S	1600 •(3527)					2250 •(4960)			
5.0) (16.5)	F	1500 •(3307)			1600 •(3527)	2300 •(5071)	2300 •(5071)			
	S	1500 •(3307)			1600 •(3527)	2300 •(5071)	2300 •(5071)			
4.0 (13.1)	F	1450 •(3197)		1550 •(3417)	2400 •(5291)	2450 •(5401)	2550 •(5622)	2700 •(5952)		
	S	1450 •(3197)		1550 •(3417)	2400 •(5291)	2450 •(5401)	2550 •(5622)	2700 •(5952)		
3.0 (9.10)	F	1500 •(3307)		2450 •(5401)	2550 •(5622)	2700 •(5952)	2950 •(6504)	3200 •(7055)	3600 •(7937)	4200 •(9259)
	S	1500 •(3307)		2050 (4519)	2400 (5291)	2700 (5952)	2950 •(6504)	3200 •(7055)	3600 •(7937)	4200 •(9259)
2.0 (6.7)	F	1600 •(3527)		2600 •(5732)	2800 •(6173)	3000 •(6614)	3350 •(7385)	3800 •(8377)	4400 •(9700)	5350 •(11795)
	S	1600 •(3527)		2000 (4409)	2350 (5181)	2750 (6063)	3250 (7165)	3800 •(8377)	4400 •(9700)	5350 •(11795)
1.0 (3.3)	F	1750 •(3858)		2700 •(5952)	2950 •(6504)	3300 •(7275)	3700 •(8157)	4200 •(9259)	4950 •(10912)	6000 •(13228)
	S	1750 •(3858)		2000 •(4409)	2300 (5071)	2650 (5842)	3150 (6944)	3800 (8377)	4700 (10362)	6000 (13228)
0.0 (0)	F	2000 •(4409)		2750 •(6063)	3050 •(6724)	3400 •(7496)	3850 •(8488)	4450 •(9810)	5200 •(11464)	6200 •(13669)
	S	1850 (4079)		1950 (4299)	2250 (4960)	2600 (5732)	3050 (6724)	3700 (8157)	4550 (10031)	5950 (13117)
-1.0 (-3.3)	F	2450 •(5401)			2950 •(6504)	3400 •(7496)	3850 •(8488)	4400 •(9700)	5100 •(11243)	6000 •(13228)
	S	2050 (4519)			2200 (4850)	2550 (5622)	3000 (6614)	3650 (8047)	4500 (9921)	5900 (13007)
-2.0 (-6.7)	F	2800 •(6173)				3000 •(6614)	3500 •(7716)	4050 •(8929)	4700 •(10362)	5450 •(12015)
	S	2450 (5401)				2600 (5732)	3050 (6724)	3650 (8047)	4550 (10031)	5450 (12015)
-3.0 (-9.10)	F	2800 •(6173)						3150 •(6944)	3750 •(8267)	1400 •(3086)
	S	2800 •(6173)						3150 •(6944)	3750 •(8267)	4400 •(9700)

* Load is limited by hydraulic capacity rather than tipping.

Ratings are based on SAE Standard No. J1097. Rated loads do not exceed 87% of hydraulic lift capacity or 75% of tipping load.


Lifting Capacity

WHEEL-TYPE
EXCAVATORS

PW100-3

WITHOUT OUTRIGGER

Arm length 2300mm(7'7")

A m (ft.in) B m (ft.in)			6.5 (21.4)	6.0 (19.8)	5.5 (18.1)	5.0 (16.5)	4.5 (14.9)	4.0 (13.1)	3.5 (11.6)	3.0 (9.10)
6.0 (19.8)	F	1300 *(2866)				1700 *(3748)				
	S	1300 *(2866)				1700 *(3748)				
5.0 (16.5)	F	1200 *(2646)			2000 *(4410)	2100 *(4630)				
	S	1200 *(2646)			1500 (3307)	1900 (4189)				
4.0 (13.1)	F	1200 *(2646)		1650 (3638)	1950 (4299)	2300 *(5071)	2350 *(5181)			
	S	1150 (2535)		1300 (2866)	1550 (3417)	1850 (4079)	2250 (4960)			
3.0 (9.10)	F	1250 *(2756)	1400 (3086)	1650 (3638)	1900 (4189)	2250 (4960)	2700 (5952)	3000 *(6614)	3350 *(7385)	3800 *(8377)
	S	1000 (2205)	1050 (2315)	1250 (2756)	1500 (3307)	1750 (3858)	2150 (4740)	2600 (5732)	3250 (7165)	3800 *(7187)
2.0 (6.7)	F	1300 (2866)	1350 (2976)	1600 (3527)	1850 (4079)	2150 (4740)	2550 (5622)	3100 (6834)	3800 (8377)	4850 (10693)
	S	950 (2094)	1050 (2315)	1200 (2646)	1400 (3086)	1700 (3748)	2000 (4410)	2400 (5291)	3000 (6614)	3750 (8267)
1.0 (3.3)	F	1250 (2756)	1350 (2876)	1550 (3417)	1800 (3968)	2050 (4519)	2450 (5401)	2900 (6394)	3550 (7826)	4500 (9921)
	S	950 (2094)	1000 (2205)	1150 (2335)	1350 (2976)	1600 (3527)	1900 (4189)	2250 (4960)	2750 (6063)	3450 (7606)
0.0 (0)	F	1300 (2866)		1500 (3307)	1700 (3748)	2000 (4410)	2350 (5181)	2800 (6173)	3450 (7606)	4350 (9590)
	S	1000 (2205)		1100 (2425)	1300 (2866)	1500 (3307)	1800 (3968)	2150 (4740)	2600 (5732)	3300 (7275)
-0.1 (-3.3)	F	1450 (3197)		1500 (3307)	1700 (3748)	1950 (4299)	2300 (5071)	2750 (6063)	3350 (7385)	4300 (9480)
	S	1050 (2315)		1100 (2425)	1250 (2756)	1500 (3307)	1750 (3858)	2100 (4630)	2550 (5622)	3750 (8267)
-2.0 (-6.7)	F	1700 (3748)			1700 (3748)	1950 (4299)	2300 (5071)	2750 (6063)	3400 (7496)	4350 (9590)
	S	1250 (2756)			1300 (2866)	1500 (3307)	1750 (3858)	2100 (4630)	2550 (5622)	3300 (7275)
-3.0 (-9.10)	F	2250 (4960)					2350 (5181)	2800 (6173)	3450 (7606)	4400 (9700)
	S	1700 (3748)					1800 (3968)	2150 (4740)	2650 (5842)	3350 (7385)

* Load is limited by hydraulic capacity rather than tipping.
Ratings are based on SAE Standard No. J1097. Rated loads do not exceed 87% of hydraulic lift capacity or 75% of tipping load.

Lifting Capacity

WHEEL-TYPE EXCAVATORS

PW100-3

WITH OUTRIGGER ON GROUND

Arm length 2300mm(7'7")

A m (ft.in) B m (ft.in)		⊗	6.5 (21.4)	6.0 (19.8)	5.5 (18.1)	5.0 (16.5)	4.5 (14.9)	4.0 (13.1)	3.5 (11.6)	3.0 (9.10)
6.0 (19.8)	F	1300 •(2866)				1700 •(3748)				
	S	1300 •(2866)				1700 •(3748)				
5.0 (16.5)	F	1200 •(2646)			2000 •(4410)	2100 •(4630)				
	S	1200 •(2646)			2000 •(4410)	2100 •(4630)				
4.0 (13.1)	F	1200 •(2646)		2000 •(4410)	2200 •(4850)	2300 •(5071)	2350 •(5181)			
	S	1200 •(2646)		2000 •(4410)	2200 •(4850)	2300 •(5071)	2350 •(5181)			
3.0 (9.10)	F	1250 •(2756)	1600 •(3527)	2300 •(5071)	2400 •(5291)	2550 •(5622)	2750 •(6063)	3000 •(6614)	3350 •(7385)	3800 •(8377)
	S	1250 •(2756)	1600 •(3527)	2100 (4630)	2400 •(5291)	2550 •(5622)	2750 •(6063)	3000 •(6614)	3350 •(7385)	3800 •(8377)
2.0 (6.7)	F	1300 •(2866)	2050 •(4519)	2500 •(5512)	2650 •(5842)	2900 •(6393)	3200 •(7055)	3600 •(7937)	4150 •(9149)	5000 •(11023)
	S	1300 •(2866)	1750 (3858)	2050 •(4519)	2350 (5181)	2750 (6063)	3200 •(7055)	3600 •(7937)	4150 •(9149)	5000 •(11023)
1.0 (3.3)	F	1450 •(3197)	2150 •(4740)	2650 •(5842)	2900 •(6393)	3200 (7055)	3550 •(7826)	4050 •(9921)	4800 •(10582)	5800 •(12787)
	S	1450 •(3197)	1750 (3858)	2000 (2206)	2300 (5071)	2650 (5842)	3150 (6944)	3800 (8377)	4750 (10472)	5800 •(12787)
0.0 (0)	F	1650 •(3638)		2700 •(5952)	3000 •(6614)	3350 •(7385)	3800 •(8377)	4350 •(9590)	5100 •(11243)	6150 •(13558)
	S	1650 •(3638)		1950 (4299)	2250 (4960)	2600 (5732)	3050 (6724)	3700 (8157)	4550 (9810)	5950 (13117)
-1.0 (-3.3)	F	1950 •(4299)		2650 •(5842)	3000 •(6614)	3400 •(7496)	3850 •(8488)	4400 •(9700)	5100 •(11243)	6050 •(13337)
	S	1850 (4079)		1900 (4189)	2200 (4850)	2550 (5622)	3000 (6614)	3600 (7937)	4500 (9921)	5900 (13007)
-2.0 (-6.7)	F	2550 •(5622)			2700 •(5952)	3150 •(6944)	3650 •(8047)	4150 •(9149)	4800 •(10582)	5650 •(12456)
	S	2200 (4850)			2200 (4850)	2550 (5622)	3000 (6614)	3600 (7937)	4500 (9921)	5650 (12456)
-3.0 (-9.10)	F	2700 •(5952)					2900 •(6393)	3500 •(7716)	4100 •(9039)	4750 •(10472)
	S	2700 •(5952)					2900 •(6393)	3500 •(7716)	4100 •(9039)	4750 •(10472)

* Load is limited by hydraulic capacity rather than tipping.

Ratings are based on SAE Standard No. J1097. Rated loads do not exceed 87% of hydraulic lift capacity or 75% of tipping load.

Lifting Capacity

WHEEL-TYPE
EXCAVATORS

PW150-1

OUTRIGGER ON GROUND Arm length 1850mm(6'1") unit: kg (lb)										
A B	⊗ MAX		7.5 m (24'7")		6 m (19'8")		4.5 m (14'9")		3 m (9'10")	
	Cf	Cs	Cf	Cs	Cf	Cs	Cf	Cs	Cf	Cs
7.5 m (24'7")	*3850 (8490)	*3850 (8490)					*3950 (8710)	*3950 (8710)		
6 m (19'8")	*3450 (7610)	*2600 (5730)			*3500 (7720)	2900 (6390)	*3950 (8710)	*3950 (8710)		
4.5 m (14'9")	*3350 (7390)	2100 (4630)			*3650 (8050)	2900 (6390)	*4500 (9920)	*4500 (9920)		
3 m (9'10")	*3350 (7390)	1850 (4080)			*4050 (8930)	2700 (5950)	*5300 (11680)	4200 (9260)		
1.5 m (4'11")	*3250 (7160)	1700 (3750)	*3250 (7160)	1700 (3750)	*4200 (9260)	2550 (5620)	*5950 (13120)	3950 (8710)		
0 m (0')	*3250 (7160)	1700 (3750)			*4200 (9260)	2350 (5180)	*5950 (13120)	3650 (8050)		
- 1.5 m (- 4'11")	*3150 (6940)	2100 (4630)			*3750 (8270)	2450 (5400)	*5150 (11350)	3850 (8490)	*6800 (14990)	*6800 (14990)
- 3 m (- 9'10")	*2700 (5950)	*2700 (5950)					*3750 (8270)	*3750 (8270)	*5400 (11900)	*5400 (11900)

WITHOUT OUTRIGGER unit: kg (lb)										
A B	⊗ MAX		7.5 m (24'7")		6 m (19'8")		4.5 m (14'9")		3 m (9'10")	
	Cf	Cs	Cf	Cs	Cf	Cs	Cf	Cs	Cf	Cs
7.5 m (24'7")	*3850 (8490)	2850 (6280)					*3950 (8710)	3550 (7830)		
6 m (19'8")	2400 (5290)	1850 (4080)			2650 (5840)	2050 (4520)	*3950 (8710)	*3550 (7830)		
4.5 m (14'9")	1950 (4300)	1450 (3200)			2650 (5840)	2050 (4520)	4150 (9150)	*3400 (7500)		
3 m (9'10")	1500 (3310)	1250 (2760)			2250 (4960)	1900 (4190)	3650 (8050)	2900 (6390)		
1.5 m (4'11")	1400 (3090)	1150 (2540)	1400 (3090)	1150 (2540)	2150 (4740)	1700 (3750)	3400 (7500)	2650 (5840)		
0 m (0')	1400 (3090)	1200 (2650)			1950 (4300)	1600 (3530)	3200 (7050)	2450 (5400)		
- 1.5 m (- 4'11")	1750 (3860)	1350 (2980)			2050 (4520)	1600 (3530)	3300 (7280)	2550 (5620)	6100 (13450)	4600 (10140)
- 3 m (- 9'10")	2400 (5290)	1950 (4300)					3300 (7280)	2650 (5840)	*5400 (11900)	4900 (10800)

* Load is limited by hydraulic capacity rather than tipping.
Ratings are based on SAE Standard No. J1097. Rated loads do not exceed
87% of hydraulic lift capacity or 75% of tipping load.

Lifting Capacity

WHEEL-TYPE
EXCAVATORS

PW210-1

Arm length 2410mm(7'11") Unit: kg (lb)

A B	Max.		7.5 m (25')		6.0 m (20')		4.5 m (15')		3.0 m (10')	
	Cf	Cs	Cf	Cs	Cf	Cs	Cf	Cs	Cf	Cs
① WITHOUT OUTRIGGER										
6.0 m (20')	3200 (7100)	2100 (4600)			*3600 (8000)	3000 (6600)				
4.5 m (15')	2700 (5900)	1700 (3700)	2900 (6400)	1850 (4100)	*4100 (9100)	2800 (6200)				
3.0 m (10')	2450 (5400)	1500 (3300)	2800 (6200)	1750 (3900)	4050 (9000)	2600 (5700)	*6400 (14100)	4000 (8800)		
1.5 m (5')	2350 (5200)	1450 (3100)	2700 (6000)	1650 (3700)	3850 (8400)	2350 (5200)	5900 (13100)	3550 (7900)		
0.0 m (0')	2450 (5400)	1450 (3200)	2650 (5800)	1600 (3500)	3700 (8100)	2250 (4900)	5700 (12600)	3350 (7400)	*5400 (12000)	*5400 (12000)
-1.5 m (-5')	2750 (6000)	1650 (3600)			3650 (8000)	2200 (4900)	5650 (12500)	3350 (7400)	*9900 (21800)	6300 (13900)
-3.0 m (-10')	3450 (7600)	2100 (4700)			3750 (8200)	2300 (5000)	5800 (12800)	3450 (7600)	*11900 (26300)	6500 (14400)
-4.5 m (-15')	5650 (12500)	3500 (7700)					6150 (13600)	3750 (8300)		
② WITH OUTRIGGER										
6.0 m (20')	*3350 (7400)	2800 (6200)			*3600 (8000)	*3600 (8000)				
4.5 m (15')	*3400 (7500)	2350 (5100)	*3850 (8500)	2500 (5600)	*4100 (9100)	3750 (8300)				
3.0 m (10')	*3550 (7900)	2100 (4600)	*4200 (9200)	2400 (5300)	*4850 (10700)	3500 (7700)	*6400 (14100)	5400 (12000)		
1.5 m (5')	*3950 (8700)	2000 (4500)	*4550 (10100)	2300 (5100)	*5600 (12300)	3250 (7200)	*7800 (17200)	4950 (11000)		
0.0 m (0')	*4600 (10100)	2100 (4600)	*4850 (10700)	2250 (5000)	*6150 (13500)	3150 (6900)	*8550 (18900)	4750 (10500)	*5400 (12000)	*5400 (12000)
-1.5 m (-5')	*5000 (11100)	2350 (5200)			*6350 (14000)	3100 (6800)	*8700 (19200)	4750 (10400)	*9900 (21800)	9250 (20400)
-3.0 m (-10')	*5500 (12100)	2950 (6500)			*5950 (13100)	3200 (7000)	*8200 (18100)	4850 (10700)	*11900 (26300)	9500 (21000)
-4.5 m (-15')	*6000 (13300)	4800 (10600)					*6450 (14200)	5150 (11400)		

* Load is limited by hydraulic capacity rather than tipping.
Ratings are based on SAE Standard No. J1097. Rated loads do not exceed 87% of hydraulic lift capacity or 75% of tipping load.