

SECTION **8E**

**SHEEP'S
FOOT ROLLERS**

CONTENTS

Specifications	8E-2
Dimensions	8E-3

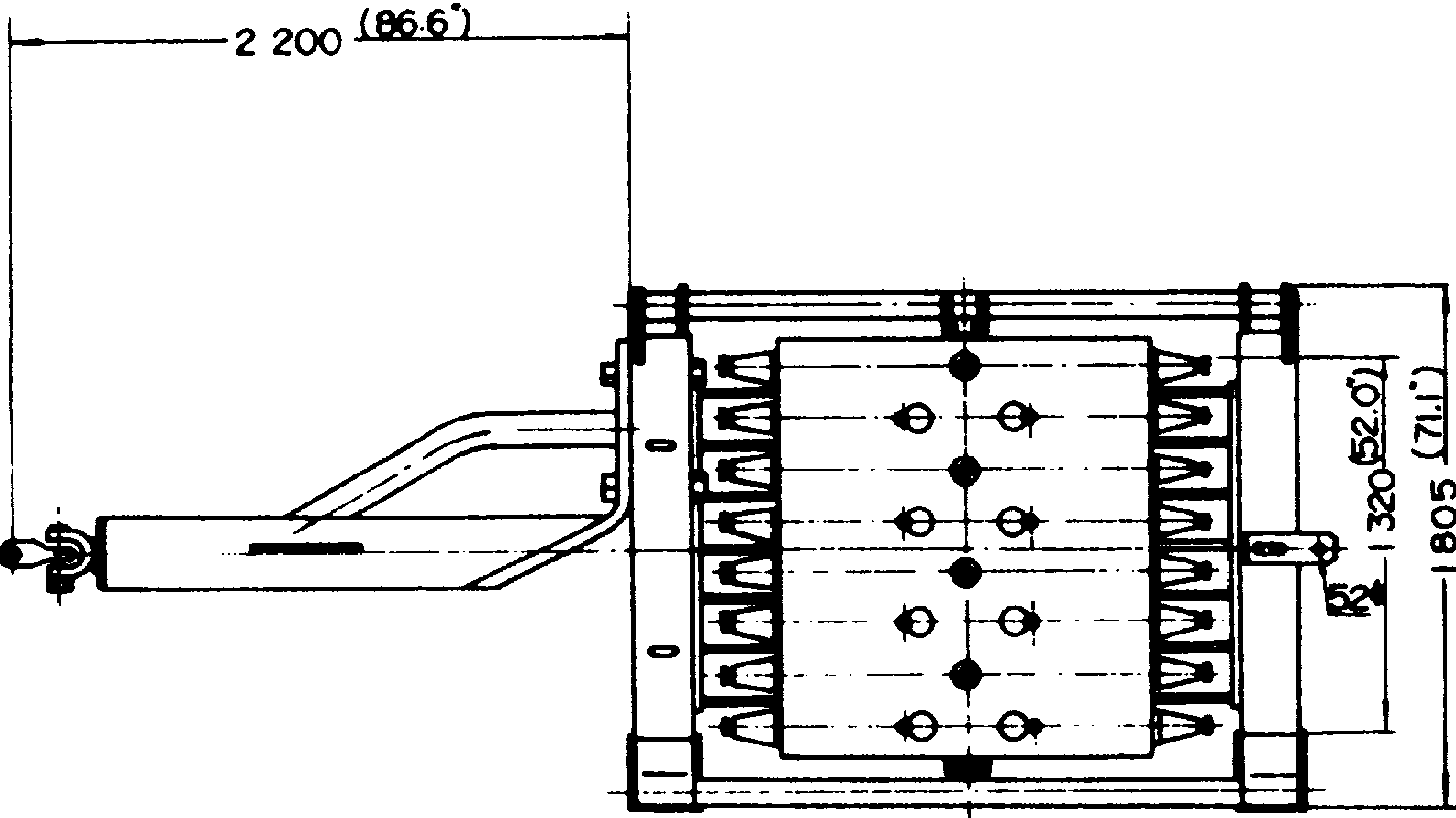


Specifications

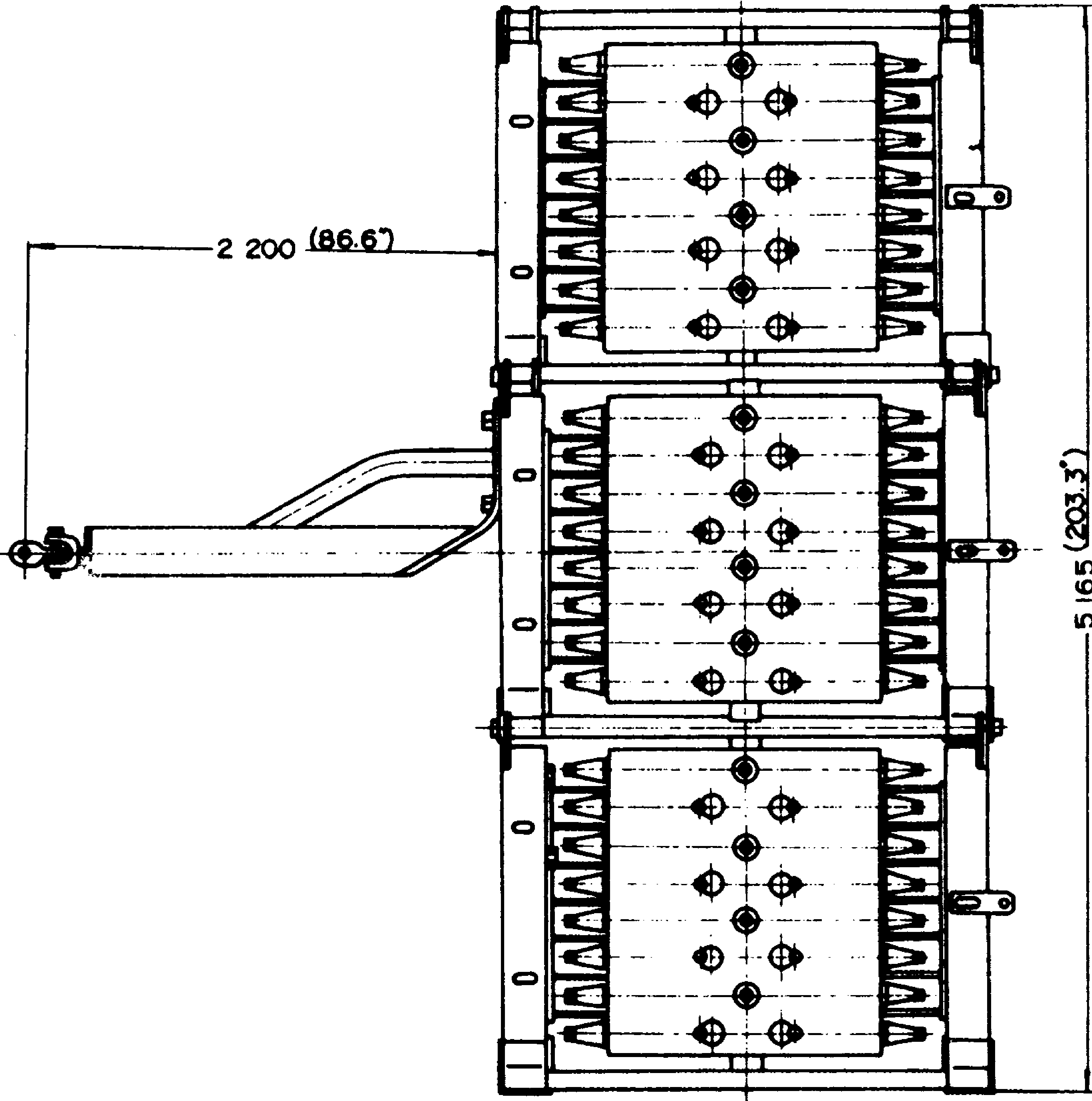
SHEEP'S FOOT
ROLLERS

Model		RF03	RF06	RF09	
Item					
Type		Towed type	Towed type	Towed type	
Recommended Tracter		D30~D65	D50~D85	D80~D355	
WEIGHT:	kg(lb)				
Crross weight		3650 (8,050)	6900 (15,220)	10150(22,380)	
Empty		3400 (7,500)	6650 (14,670)	9900 (21,830)	
With water ballast		4900 (10,800)	9650 (21,290)	14400(31,750)	
With sand ballast		6400 (14,110)	12650(27,890)	18900(41,670)	
PERFORMANCE:					
Compacting width	mm(in)	1320 (52.0)	3000 (118.1)	4680 (184.3)	
Compacting pressure:	kg/cm ² (PSI)				
Empty		28 (400)	27 (380)	26 (370)	
With water ballast		41 (580)	40 (570)	39 (550)	
With sand ballast		53 (750)	50 (710)	51 (730)	
DRUM:					
No. of drums		1	2	3	
Diameter	mm(in)	1310 (51.6)	1310 (51.6)	1310 (51.6)	
Width	mm(in)	1450 (57.1)	1450 (57.1)	1450 (57.1)	
FOOT:					
Type		Replaceable	Replaceable	Replaceable	
No, of feet		96×1	96×2	96×3	
Height	mm(in)	200 (7.9)	200 (7.9)	200 (7.9)	
Ground contact area	cm ² (sq.in)	30 (4.7)	60 (9.3)	90 (14)	
DRAWBAR:	mm(in)	37(1.5) for D30	47(1.9) for D50,	52(2.0) for D80,	
Pin diameter		4.7(1.9) for D50,	D60 andD65	and D85	
		D60 andD65	52(2.0) for D80,	59(2.3) for D150,	
			andD85	D155 and D355	

RF03



RF09



RF06

