

SECTION **1F**

**PIPELAYERS**

**CONTENTS**

<b>Features . . . . .</b>	<b>1F-2</b>
<b>Specifications . . . . .</b>	<b>1F-3</b>
<b>Lifting capacity . . . . .</b>	<b>1F-4</b>

### Faster, effortless winch control

- The D355C and D155C require only three levers for winch control, one each for the transmission, hook and boom.
- The smaller D85C and D65C have a fourth lever for free fall because their winch is hydraulically/mechanically controlled.
- Choice of hook speeds for raising and lowering facilitates stringing, cradling and lowering in.

### Big lifting capacity

- Komatsu pipelayers have the largest lifting capacity in their respective classes.
- Adjustment of the counterweights is made hydraulically and conveniently by a lever beside the operator's seat for machine balance.

### Safe operation

- Komatsu pipelayers offer safety features to keep operator working confidently.
- All machines are standardly equipped with an automatic boom maximum stopper device.
- There is a free-fall setting on the hook control lever for use during an emergency.
- The D355C and D155C have a closed-type winch brake that prevents slips during operation in wet weather.
- Because the hook wires on the D355C and D155C are located away from the operator, danger in the event of a wire cut is minimized.
- The D85C and D65C have a wire guard to protect the operator.

### Proven, stable undercarriage

- Main components of these four machines are basically the same as that of the Komatsu D355A, D155A, D85A and D65A bulldozers, it has a proven record for reliable and durable performance, plus easy maintenance.
- A wide track gauge, large length of track on ground and counter weights give these pipelayers more stability to operate on steep slopes.

Specifications

PIPELAYERS

Copyright © 2000 by TIF To PDF, Inc. All rights reserved. To remove this mark, please register this software.

Model		D65C-6	D85C-12	D155C-1	D355C-3	
OPERATING WEIGHT	kg(lb)	22000 (48,500)	28000 (61,730)	45800 (100,970)	57850 (127,540)	
MAX. LIFTING CAPACITY	kg(lb/kN)	28000 (61,730/274)	41000 (90,390/402)	70000 (154,320/686)	92000 (202,820/902)	
FLYWHEEL HORSEPOWER	HP (kW) /RPM	155(115.6)/1850	180(134)/1850	320(239)/2000	360(269)/2000	
DIMENSIONS:						
Overall length	mm(ft.in)	4000 (13' 1" )	4615 (15' 2" )	5660 (18' 7" )	5995 (19' 8" )	
*Overall width	mm(ft.in)	3280 (10' 9" )	3490 (11' 5" )	3760 (12' 4" )	4405 (14' 5" )	
Overall height	mm(ft.in)	3015 ( 9'11" )	3245 (10' 8" )	3900 (12'10" )	4100 (13' 5" )	
Track gauge	mm(ft.in)	2050 ( 6' 9" )	2250 ( 7' 5" )	2380 ( 7'10" )	3840 (12' 7" )	
Length of track on ground	mm(ft.in)	2635 ( 8' 8" )	2730 ( 8'11" )	3620 (11'11" )	3750 (12' 4" )	
Ground contact area	cm <sup>2</sup> (sq.in)	29510 (4,574)	33300 (5,161)	51400 (7,967)	64500 (9,998)	
Ground pressure	kg/cm <sup>2</sup> (PSI/kPa)	0.75 (10.67/73.6)	0.84 (11.94/82.4)	0.89 (12.66/87.3)	0.90 (12.8/88.3)	
PIPELAYING EQUIPMENT:						
Hook speeds: (bare drum)						
Raise	1st	m/min(FPM)	9.5 ( 31.2 )	9.4 ( 30.8 )	6.0 ( 19.7 )	5.5 ( 18.0 )
	2nd		19.1 ( 62.7 )	21.2 ( 69.6 )	13.8 ( 45.3 )	12.7 ( 41.7 )
	3rd		31.7 (104 )	24.5 ( 80.4 )		
Lower	1st		11.8 ( 38.7 )	9.1 ( 29.9 )	4.8 ( 15.7 )	4.5 ( 14.8 )
	2nd		23.6 ( 77.4 )	20.6 ( 67.6 )	11.1 ( 36.4 )	10.2 ( 33.5 )
	3rd		37.8 (124 )	31.6 (103.7)		
Boom:						
Length	mm(ft.in)	5500 (18'1")	5500 (18'1")	6200 (20'4")	7300 (23'11")	
Winch: Type		** H.M	** H.M	***H.C	***H.C	
ENGINE:						
Model		CUMMINS NH220	CUMMINS NH220	KOMATSU S6D155	KOMATSU S6D155	
No. of cylinders- bore x stroke		mm (in)	6 – 130.2 × 152.5 (5.13" × 6.00")	6 – 130.2 × 152.5 (5.13" × 6.00")	6 – 155 × 170 (6.10" × 6.69")	
Piston displacement		ltr(cu.in)	12.17 (743)	12.17 (743)	19.26 (1,175)	
PERFORMANCE:						
Travel speeds						
Forward/Reverse	1st	km/h(MPH)	3.6(2.2)/ 4.7(2.9)	3.0(1.9)/ 3.6(2.2)	3.6(2.2)/ 4.4(2.7)	3.3(2.1)/ 3.9(2.4)
	2nd		6.3(3.9)/ 8.1(5.0)	5.5(3.4)/ 6.5(4.0)	6.6(4.1)/ 7.8(4.8)	5.9(3.7)/ 7.0(4.3)
	3rd		10.2(6.3)/13.0(8.1)	9.3(5.8)/10.5(6.5)	11.2(7.0)/12.4(7.7)	9.8(6.1)/11.0(6.8)
UNDER CARRIAGE:						
No. of rollers		(Carrier/track)	2/7	2/6	2/8	2/8
Shoe width						
Standard	mm(in)	560 (22.0")	610 (24.0")	710 (28.0")	860 (34.0")	
Optional	mm(in)	510 (20.0"), 610 (24.0")	660 (26.0"), 710 (28.0")	760 (30.0")	960 (38.0") 1010 (40.0")	

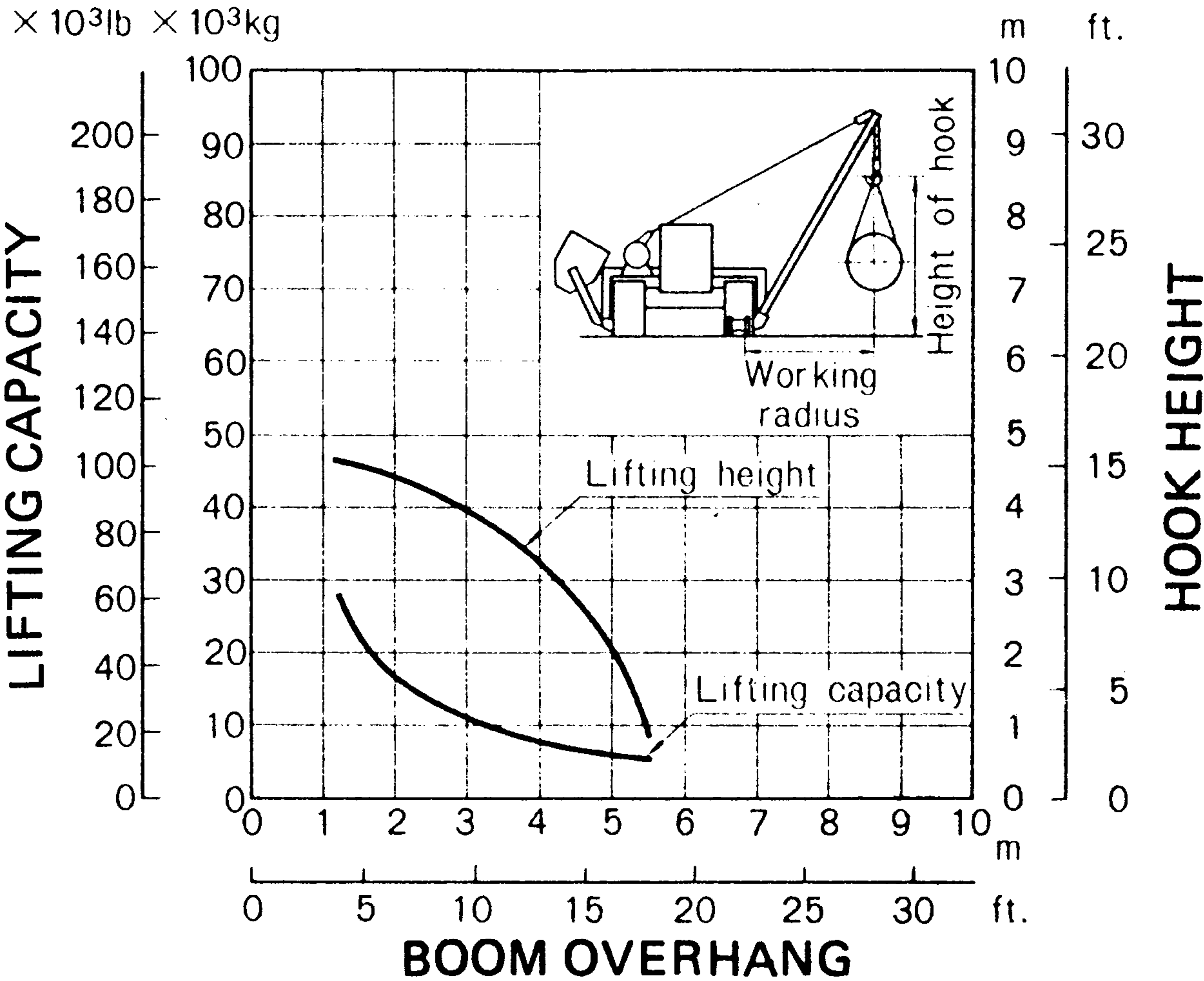
\* Counterweight retracted, less boom      \*\* Hydraulic and Mechanical control, double drum, reversible  
\*\*\* Hydraulically controlled double drum, reversible



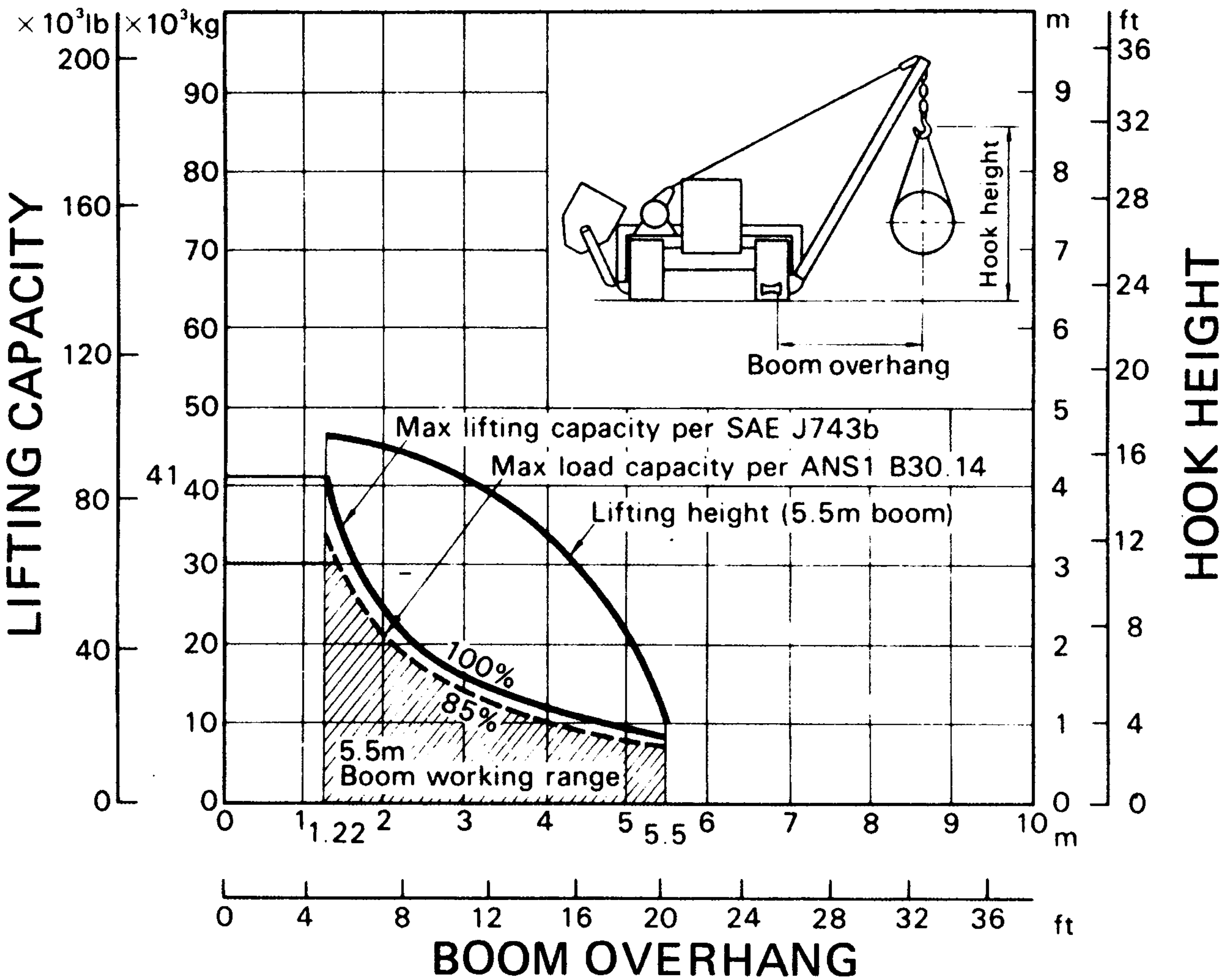
Lifting Capacity

PIPELAYERS

D65C-6



D85C-12

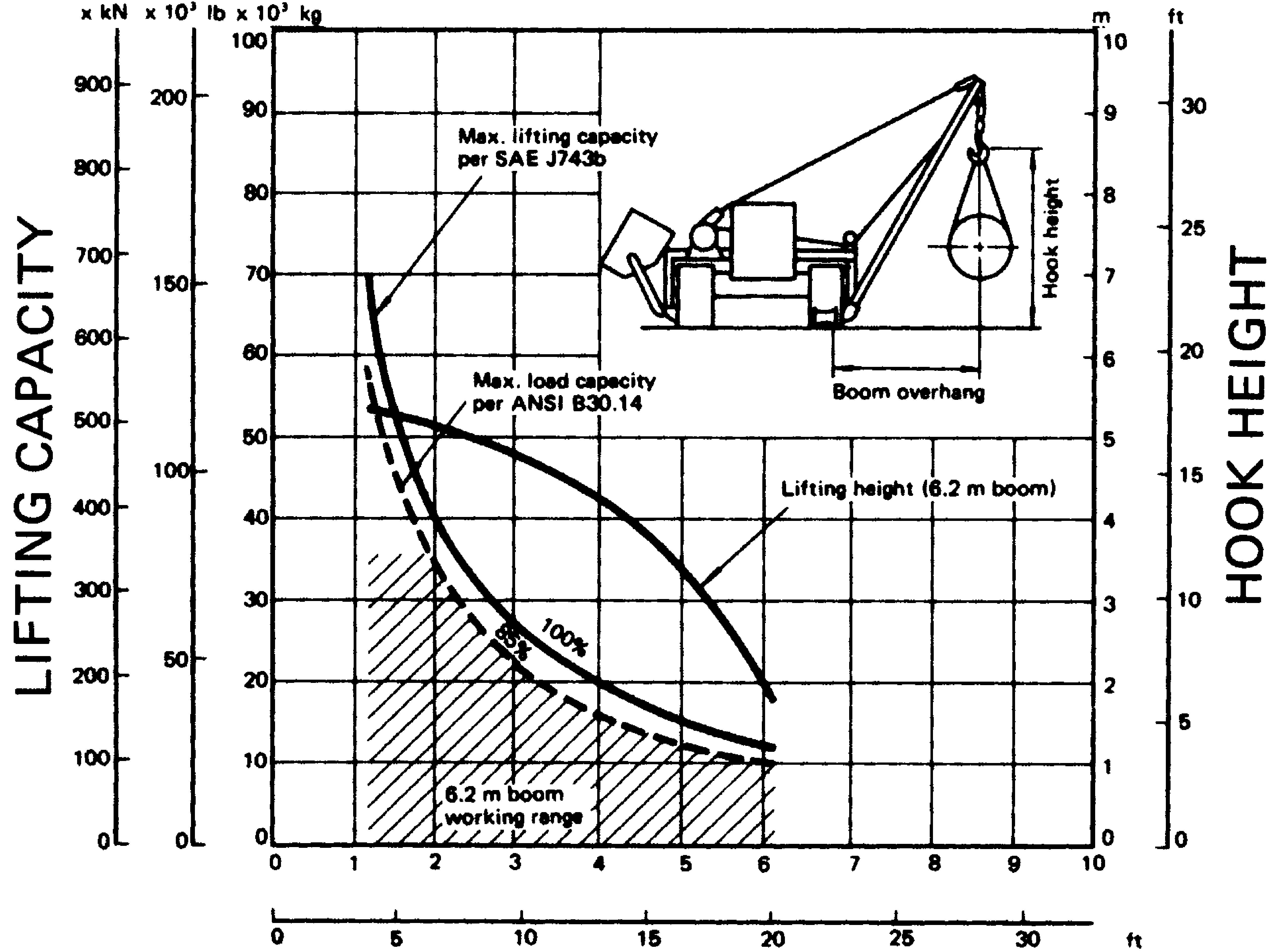


Specified equipment: 20 mm (0.79") dia. wire rope with minimum breaking strength of 27 600 kg (60.850 lb/270 kN). 5-part load line, 5-part boom line and 5995 kg (13.220 lb) counterweight. (extended).

# Lifting Capacity

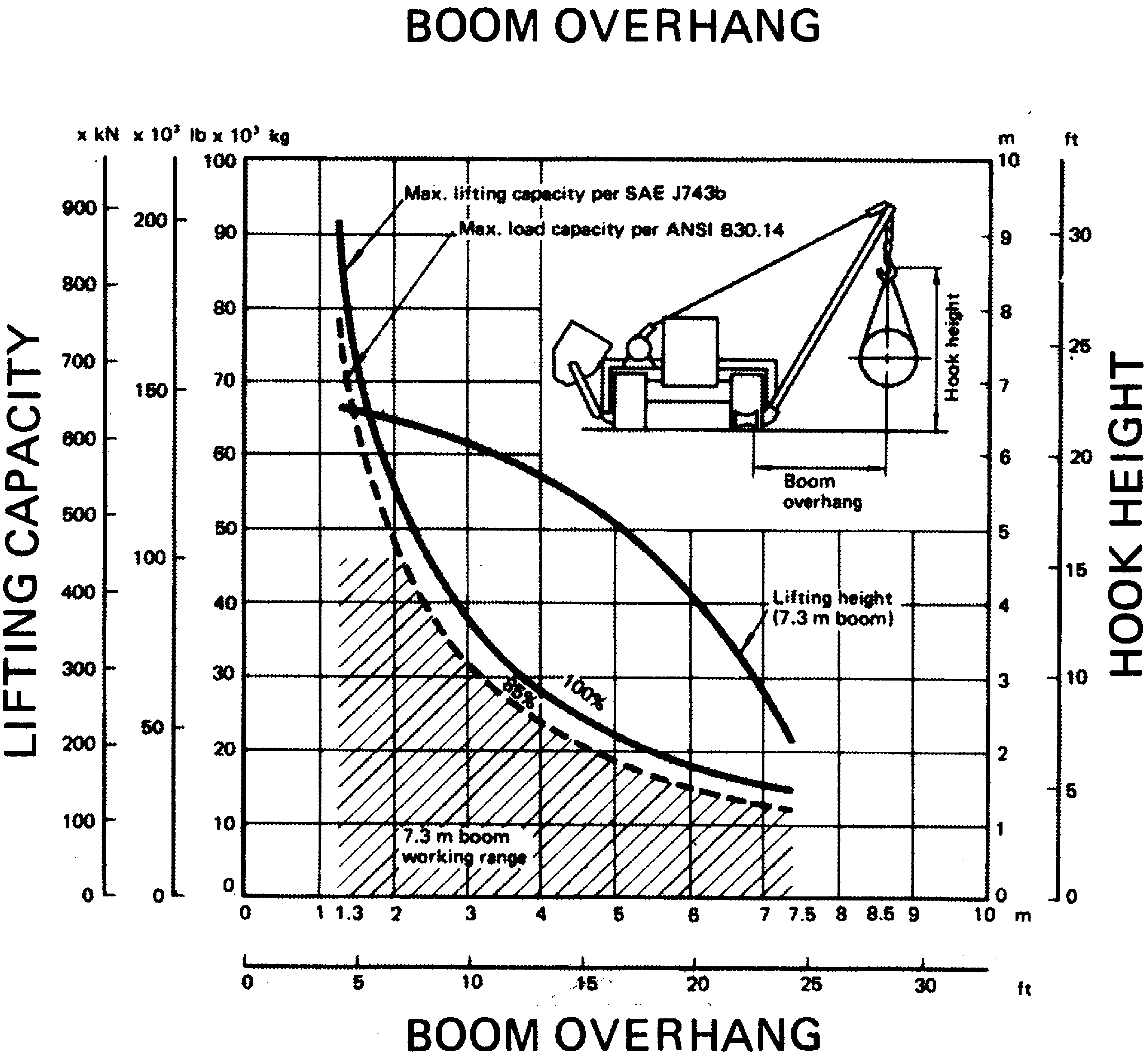
# PIPELAYERS

D155C-1



Specified equipment: 20 mm (0.79'') dia. wire rope with minimum strength of 27600 kg (60,850 lb/270 kN), 5-part load line, 5-part boom line and 9130 kg (20,130 lb) counterweight (extended).

D355C-3



Specified equipment: 20 mm (0.79'') dia. wire rope with minimum strength of 27600 kg (60,850 lb/270 kN), 5-part load line, 5-part boom line and 9130 kg (20,130 lb) counterweight (extended).