

SECTION

1D

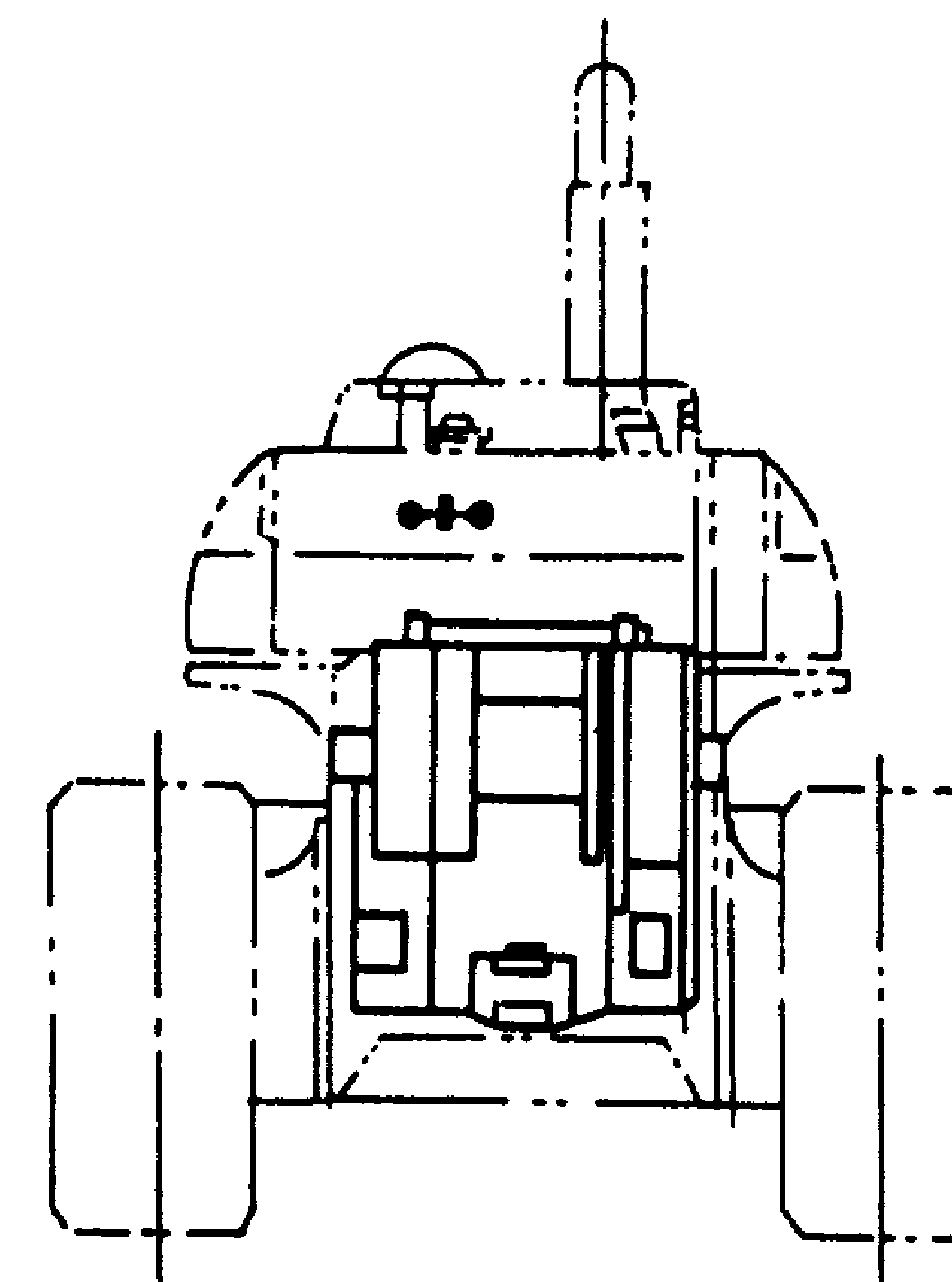
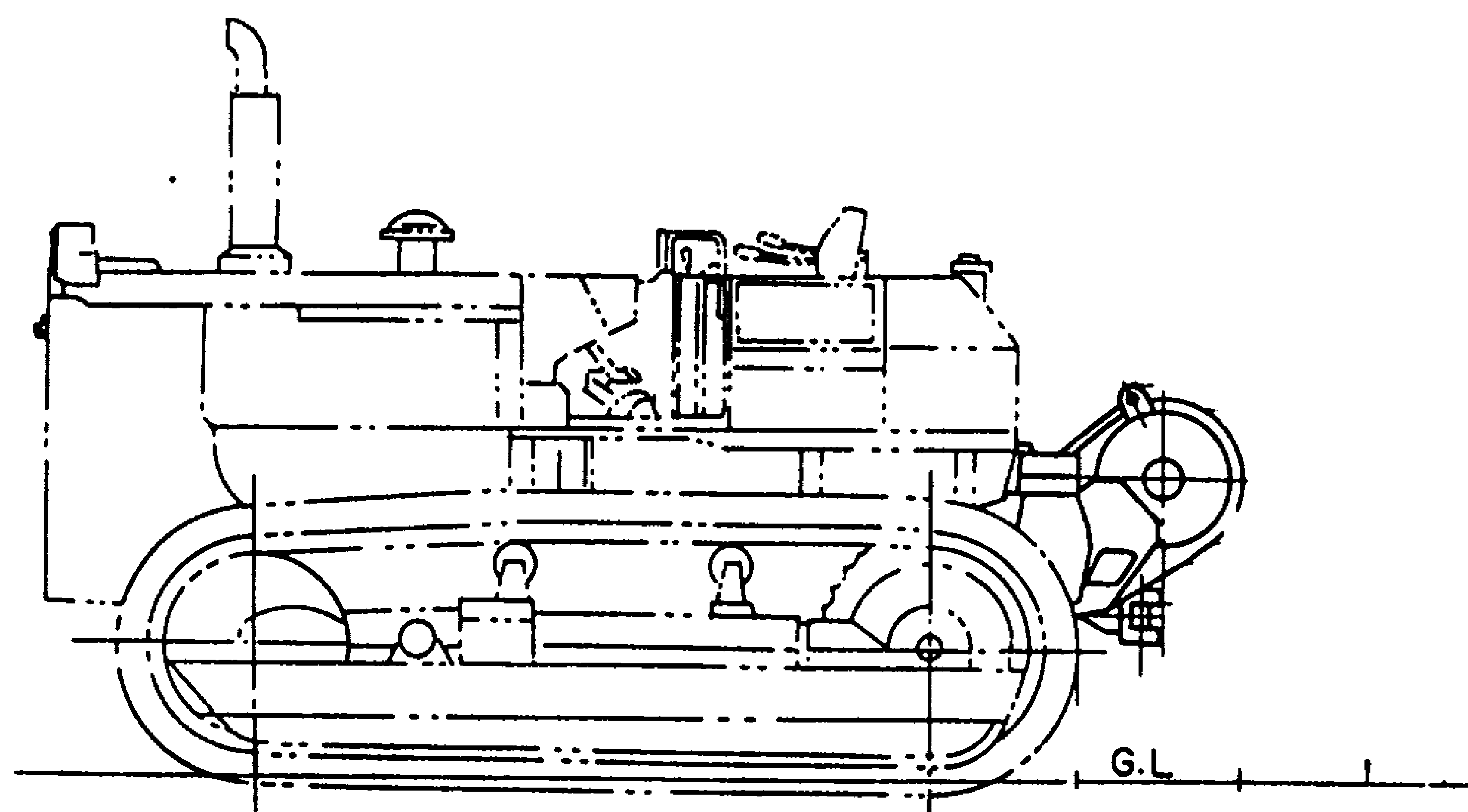
TOWING WINCHES

CONTENTS

Specifications 1D-2

Specifications

TOWING WINCH



Item		Model	D20A,P-6	D31E,P-18 D31P-18A	D37E,P-2	D40A,P-3
Type			Dry type	Wet type	Wet type	Dry type
Weight	kg(lb)		310 (680)	490 (1,080)	500 (1,100)	650 (1,430)
Drum dimension:						
Length	mm(in)		600 (23.6)	740 (29.1)	740 (29.1)	740 (29.1)
Width	mm(in)		655 (25.8)	750 (29.5)	750 (29.5)	800 (31.5)
Height	mm(in)		520 (20.5)	625 (24.6)	625 (24.6)	795 (31.3)
Drum diameter	mm(in)		165 (6.5)	180 (7.1)	180 (7.1)	210 (8.3)
Flange diameter	mm(in)		330 (13.0)	400 (15.7)	400 (15.7)	465 (18.3)
Drum width	mm(in)		205 (8.1)	230 (9.1)	230 (9.1)	280 (11.0)
Cable:						
Cable dia. x length	mm x m (in x ft)		14x40 (0.55x131)	16x40 (0.63x131)	16x40 (0.63x131)	18x50 (0.70x164)
Performance:						
Line speed:						
Bare drum	m/min. (FPM)		F/R 33 (108)	F 33 (108) R 36 (118)	F 33 (108) R 36 (118)	F/R 31 (102)
Full drum	m/min. (FPM)		F/R 57 (187)	F 65 (213) R 71 (233)	F 65 (213) R 71 (233)	F/R 61 (197)
Line pull:						
Bare drum	kg(lb)		5500 (12,130)	9600 (21,160)	10300 (22,710)	13500 (29,760)
Full drum	kg(lb)		3100 (6,830)	4900 (10,800)	5200 (11,460)	6900 (15,210)

Specifications

TOWING WINCHES

Item		Model	D41A,P-3 D41A-3A	D41E-3	D50A,P-17	D53A,P-17
Type			Wet type	Wet type	Dry type	Wet type
Weight	kg(lb)		780 (1,720)	780 (1,720)	810 (1,790)	830 (1,830)
Drum dimension:						
Length	mm(in)		835 (32.9)	835 (32.9)	780 (30.7)	835 (32.9)
Width	mm(in)		790 (31.1)	790 (31.1)	855 (33.7)	790 (31.1)
Height	mm(in)		805 (31.7)	805 (31.7)	940 (37.0)	805 (31.7)
Drum diameter	mm(in)		210 (8.3)	210 (8.3)	230 (9.1)	210 (8.3)
Flange diameter	mm(in)		465 (18.3)	465 (18.3)	510 (20.1)	465 (18.3)
Drum width	mm(in)		280 (11.0)	280 (11.0)	300 (11.8)	280 (11.0)
Cable:						
Cable dia. x length	mm x m (in x ft)		18x50 (0.70x164)	18x50 (0.70x164)	22.4x65 (0.88x213)	20x50 (0.79x164)
Performance:						
Line speed:						
Bare drum	m/min. (FPM)		F/R 31 (102)	F/R 31 (102)	F/R A:32 (105) P:29 (95)	F/R 31 (102)
Full drum	m/min. (FPM)		F/R 60 (197)	F/R 60 (197)	F/R A:62 (203) P:57 (187)	F/R 59 (194)
Line pull:						
Bare drum	kg(lb)		13600 (29,980)	13900 (30,640)	A: 17300(38,140) P: 19100(42,110)	18800 (41,450)
Full drum	kg(lb)		6900 (15,210)	7000 (15,430)	A: 9000(19,840) P: 9900(21,830)	9700 (21,380)

Specifications

TOWING WINCHES

Model		D58E,P-1	D60A,E,P-8	D65A-8 D60A,E-8	D65E,P-8 D60P-8
Item					
Type		Wet type	Dry type	Wet type	Wet type
Weight	kg(lb)	830 (1,830)	1390 (3,060)	1320 (2,910)	1320 (2,910)
Drum dimension:					
Length	mm(in)	835 (32.9)	1035 (40.7)	1005 (39.6)	1005 (39.6)
Width	mm(in)	790 (31.1)	1135 (44.7)	1080 (42.5)	1080 (42.5)
Height	mm(in)	805 (31.7)	910 (35.8)	980 (38.6)	980 (38.6)
Drum diameter	mm(in)	210 (8.3)	290 (11.4)	255 (10.0)	255 (10.0)
Flange diameter	mm(in)	465 (18.3)	560 (22.0)	540 (21.3)	540 (21.3)
Drum width	mm(in)	280 (11.0)	335 (13.2)	280 (11.0)	280 (11.0)
Cable:					
Cable dia. x length	mm x m (in x ft)	20x50 (0.79x164)	26x65 (1.02x213)	26x65 (1.02x213)	26x65 (1.02x213)
Performance:					
Line speed:					
Bare drum	m/min. (FPM)	F/R 31 (102)	F/R 30 (98)	F 26 (85) R 53 (174)	F 26 (85) R 53 (174)
Full drum	m/min. (FPM)	F/R 59 (194)	F/R 50 (164)	F 48 (157) R 96 (315)	F 48 (157) R 96 (315)
Line pull:					
Bare drum	kg(lb)	19400 (42,770)	A: 24200(53,350) E: 26400(58,200) P: 25700(56,600)	A: 27500(60,630) E: 30000(66,140)	29200 (64,370)
Full drum	kg(lb)	10000 (22,050)	A: 14300(31,530) E: 15600(34,390) P: 15200(33,510)	A: 15000(33,070) E: 16400(36,160)	15900 (35,050)

Specification

TOWING WINCHES

Item \ Model		D68E,P-1	D83E,P-1	D85A-21 D85P-21	D150A-1 D155A-1
Type		Wet type	Wet type	Wet type	Wet type
Weight	kg(lb)	1320 (2,910)	1705 (3,760)	1660 (3,660)	1660(3,660)
Drum dimension:					
Length	mm(in)	1005 (39.6)	1055 (41.5)	1010 (39.8)	1010 (39.8)
Width	mm(in)	1080 (42.5)	1181 (46.5)	1365 (53.7)	1365 (53.7)
Height	mm(in)	980 (38.6)	1094 (43.1)	1095 (43.1)	1095 (43.1)
Drum diameter	mm(in)	255 (10.0)	275 (10.8)	330 (13.0)	330 (13.0)
Flange diameter	mm(in)	540 (21.3)	570 (22.4)	600 (23.6)	600 (23.6)
Drum width	mm(in)	280 (11.0)	295 (11.6)	300 (11.8)	300 (11.8)
Cable:					
Cable dia. x length	mm x m (in x ft)	26 x 65 (1.02 x 213)	26 x 65 (1.02 x 213)	26 x 90 (1.02 x 295)	26 x 90 (1.02 x 295)
Performance:					
Line speed:					
Bare drum	m/min. (FPM)	F 26 (85) R 53 (174)	F 28.8 (94.5) R 77.5 (254.3)	F 31 (102)	F D150A : 27 (89) D155A : 32 (105)
Full drum	m/min. (FPM)	F 48 (157) R 96 (315)	F 52.1 (170.9) R 140.0 (459.3)	F 50 (164)	F D150A : 44 (144) D155A : 52.5 (172)
Line pull:					
Bare drum	kg(lb)	29200 (64,370)	33240 (73,280)	45500 (100,310)	D150A: 45500 (100,310) D155A: 45500 (100,310)
Full drum	kg(lb)	15900 (35,050)	18460 (40,700)	45500 (100,310)	D150A: 30700 (67,680) D155A: 45500 (100,310)